

Special Holiday Edition

ROOSIE

sponsored by:  
RNA Business Group

December, 2012 Teri Butorac-Lee: Editor



6 - 8 PM

WEDNESDAY, DECEMBER 12

# WINTER CELEBRATION & TREE LIGHTING

AT 65TH & ROOSEVELT

WITH

LIVE HOLIDAY MUSIC 6 - 8 PM

TREE LIGHTING AT 730 PM

## DECORATE THE TREE!

Please bring an ornament to  
place on the tree throughout the evening

# EAT, DRINK, SHOP, CELEBRATE IN ROOSEVELT!

Presented by  
RNA Business Group

Sponsored by  
Roosevelt Court Building, Ten Thousand Villages, and Wayward Coffeehouse

Poster Watercolor by  
Urban Idealist Art & Design

*Shop a local non-profit retailer and help your global community too! We are volunteer run and always looking for talented elves; stop by to inquire!*



HARMONY. MADE BY HAND.™

A Fair Trade Retailer.

Gifts, jewelry and home decor made by fairly paid artisans in 38 countries.

**BRING IN THIS COUPON  
TO SAVE 25% OFF  
ONE ITEM**

Not valid with other discounts, purchase of gift cards.

TEN THOUSAND VILLAGES  
Roosevelt Court, 6417 Roosevelt Way N.E.,  
Suite 101 Seattle, WA 98115  
[www.seattle.tenthousandvillages.com](http://www.seattle.tenthousandvillages.com)

## EVOLVE HAIR AND ART AN ORGANIC SALON

In appreciation of our neighbors and friends we are offering a \$10. discount on any service to new clients and 10% off on products and gifts to all through December, with this coupon.

Give an experience with one of our gift certificates for the holidays.  
Match that with one of our organic,  
local or sustainable gifts and you're golden.

Expertise and kindness in every service.  
Hand Knit and Upcycled Cashmere fingerless gloves.  
Organic Essential Oil soy candles, Jewelry, Art, Hats and  
glamorous Handbeaded Bollywood Headbands.

6317 Roosevelt Way NE  
(206) 922-3177

book online or call @ [www.evolvehairandart.com](http://www.evolvehairandart.com)  
[facebook.com/EvolveHairandArt](https://facebook.com/EvolveHairandArt)

EVOLVE Organically  
Find new ways to enjoy and sustain life!

# Carmelized Glazed Pears

*This healthy dessert can be made throughout the year highlighting whatever fruit is in season, from pears and apples to peaches and plums.*



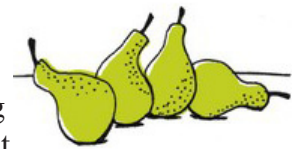
Makes 6 servings

### Ingredients

3 tablespoons salted butter  
3/4 cups packed brown sugar  
3 Bosc pears, halved and cored  
1/4 cup sliced almonds, toasted  
1/2 cup plain yogurt, optional

### Instructions:

Preheat oven to 400° F



- Put butter in a 6"x8" baking dish and place in oven to melt.
- Sprinkle brown sugar evenly over melted butter.
- Place fruit cut-side down in a single layer over the sugar and butter.
- Bake until fruit is tender all the way through, about 30 minutes.
- Turn fruit over, baste with caramel sauce and continue to bake until golden and glossy, about 10 more minutes.
- Remove from oven and let cool for a few minutes before serving.
- Place fruit in serving bowls and drizzle with caramel sauce.
- Sprinkle with toasted almonds.
- Add a dollop of plain yogurt on the side for a pleasant balance of flavors.

### Toasting Almonds

- Preheat oven to 300° F.
- Place almonds spread evenly on a baking tray.
- Place in oven for 8-10 minutes, until evenly golden brown.
- Remove immediately and cool in a bowl.



**Happy Holidays**

from

## **BELLA CLEANERS**

Hak and Karen Kim

7:00 – 7:00 Mon thru Fri

9:00 – 5:00 Sat

6419 12<sup>TH</sup> Ave NE

Seattle, WA 98115

206-729-2772



**Yappy Holidays!**  
from



Your neighborhood natural  
pet food and supply store

Visit us to fulfill all of your holiday  
shopping needs for your furry  
companions!

Also join us every Thursday  
from 5:30 - 7:30pm for  
**Yappy Hour!**

10% off all treats, \$8 nail trims,  
free snacks, and great company!

**Happy Holidays**



 **SOUNDTRANSIT**  
RIDE THE WAVE

soundtransit.org / 24-hour Construction Hotline 1-888-298-2395

\*\*\* SHOP LOCAL THIS HOLIDAY SEASON \*\*\*

**Your neighborhood gift  
& book store!**



**Know ThySelf**  
**EAST WEST**  
**BOOKSHOP**

www.eastwestbookshop.com

6500 Roosevelt Way NE, Seattle 206-523-3726

**NEW!**  
Tea Garden Cafe  
SANDWICHES  
SALADS  
DESSERTS

**EAST WEST BUCKS!**

Bring this coupon  
& save \$5 off  
your purchase  
of \$25 or more!\*

**\$5 off**



\*Valid through Dec. 31, 2012. One coupon per person; limited to stock on-hand; not valid in conjunction with other discounts.



## FREE LEGAL CLINIC

On Saturday, December 15, 2012, lawyers from several offices will open their doors to provide a **FREE LEGAL CLINIC** to our neighbors in Roosevelt, Ravenna, and Wedgwood.

**WHAT:** Free 15-minute confidential consultation with an attorney (Advance appointment is required, see below)

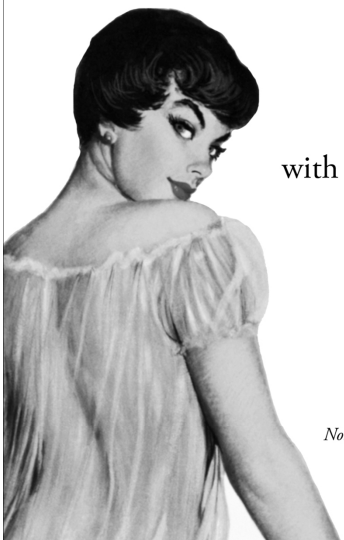
### AREAS OF PRACTICE:

- Family law
- Criminal law
- Business
- Estate planning, Probate & Guardianship
- Personal Injury
- Civil Litigation
- Adoption

**WHERE:** 3418 NE 65th Street, Suite A  
Seattle 98115 (At the corner of NE 65th Street and 35th Avenue NE)

**WHEN:** Saturday, December 15, 2012  
9 am to 1 pm

**APPOINTMENT:** To make an appointment, call (206) 525-4900 from 9:00 am to 5:00 pm



50% off  
a Haircut

with Dean, Rebekah or Denise\*



Regularly \$36

\*Must mention Roosevelt Rosie when booking.  
Not valid during happy hour or with any other offers.  
Offer expires January 31, 2013.

**NOW OPEN 7 DAYS A WEEK**

6315 Roosevelt Way NE, Seattle, WA 98115 • 206.526.1470 • www.derbysalon.com



Dil Maharjom: Rain City Burgers

**Seattle Public Utilities Resource Ventures** program provides free environmental assistance to Seattle area businesses. We encourage the businesses of the Roosevelt neighborhood to:

*"Get on the Map,"*

a free program that highlights small businesses that are taking green actions. The more "green" actions your business practices, the "greener" your business is on our city-wide map! For more information, please visit:

<http://resourceventuregotm.org> or call

Henry Han at 206-504-0803 t



residential • commercial • municipal



architecture • planning

6211 Roosevelt Way NE  
Seattle, WA 98115  
206-522-3830  
[www.tca-inc.com](http://www.tca-inc.com)



***We sadly and suddenly*** lost one of our longtime dear customers, Paul Orcutt, on November 8<sup>th</sup> 2012. During this time of great loss, Paul's wife Debbie and family generously gifted a sum of money in Paul's name to buy coffee drinks for those he knew and for those he never had the chance to meet. We are all so honored, and deeply touched by this amazing gesture of sharing. Paul was endlessly positive and had a gracious spirit, and we will miss him. Thank you Debbie and Family.

*Cowen Park Grocery and Café*  
206-525-1117  
1217 NE Ravenna Blvd., Seattle, WA 98105



## Season's Greetings

U.S. Bank hopes this holiday season is filled with joy for you and your family. We are dedicated to being your hometown bank with the financial strength and support that you need and deserve.

Other banks may promise great service but at U.S. Bank, we deliver great service and demonstrate our loyalty and dedication to the community every day – we are your family, we are your friends, we are U.S. Bank.

All of  serving you®



**usbank.com**  
Member FDIC



6814 NE Roosevelt Way NE

Monday - Thursday: 10 am to 5 pm  
Friday: 10 am to 6 pm  
Saturday: 10 am to 5 pm  
206-524-3399

The American Cancer Society Discovery Shop is grateful to be located in the Roosevelt neighborhood. Because of our customers, we continue to work toward a cure for cancer. In December, in appreciation for your patronage, we will have a 10% discount on all items, except white tags, from the 1st to the 8th; 20% the 10th to the 15th and 30% from the 17th to the 22nd. See you soon!



Volunteers needed for one four hour shift a week. RHS seniors fulfill community service requirements volunteering with us.

## The TRADING MUSICIAN

New, Used & Vintage Musical Equipment

**BUY • SELL • TRADE**



Time to start thinking about Christmas shopping for your special Who's, and nothing says Merry Christmas like the gift of music!

Check out our Guitars, Amps, Drums & Percussion, Keyboards, Ukuleles, Banjos, Mandolins & other great gear & accessories at [www.TradingMusician.com](http://www.TradingMusician.com) or 5908 Roosevelt Way NE, Seattle • 206-522-6707

Open 11am - 7pm Tuesdays thru Sundays & OPEN MONDAYS IN DECEMBER (12/3, 12/10, 12/17, 12/24)

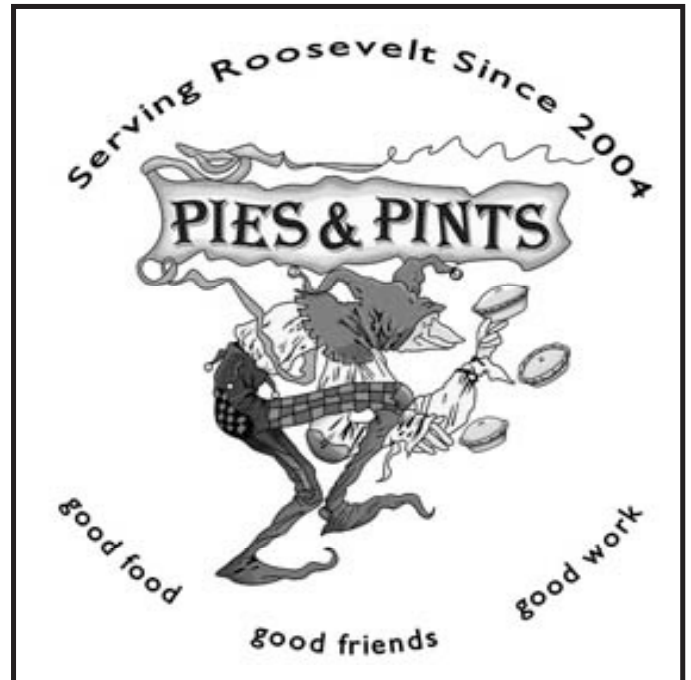
**Happy Holidays!**



## Sales Parts Repair

6029 Roosevelt Way NE  
(206) 985-7433  
ridebicycles.com

We call our pies "Australian-style" because they can be eaten from the hand. Our pies are hand made: From the stocks, gravies and fillings, to the crafting of the pie itself, our pies are made by hand daily right here in our own kitchen.



6029 Roosevelt Way NE • 206-985-7433 • www.ridebicycles.com

Clip this coupon for a Winter  
Tune Special for \$59. That's  
\$21 off our regular price!\*

\*Regular price of Complete Tune is \$80. Does not  
include parts. One per person. Expires 01/31/13.

**We've Been Voted into  
the Top 10 Best Bike  
Shop in Western  
Washington!**



- Since 1976 -

*Seattle's oldest vegetarian cafe*

o o o

*Join us seven days a week  
for breakfast, lunch & dinner*

o o o

*Happy Hour! M-F, 4-6pm*

o o o

*Fresh baked goods & desserts*

o o o

*Beer, wine, espresso & kombucha*

Want Lemon Tahini at Home?

Do you crave our legendary dressing while away from Sunlight Cafe? We sell it for take-away. A healthy 12 oz. bottle is just

**\$5.50!**

**Fernando Vega, MD**  
MY PHILOSOPHY |  
BACKGROUND

I was born and grew up in Seattle, though I spent some early years in the Philippines living between the jungle and the city of Manila. For the first five years of my medical career, I practiced Emergency Medicine in ERs throughout Pennsylvania and Washington.



When I began private practice in 1981, I found practitioners of other disciplines to join me (acupuncturists, physical therapists, naturopaths, midwives, and physicians in other specialties), and the collective of Seattle Healing Arts Center was born.

During more than 30 years practicing medicine, I have been privileged to hear many stories and witness a wide range of clinical situations and outcomes. My approach with new patients often starts with learning some of their life story. This includes influences on their emotional and social development as well as their spiritual perspectives. From this foundation of understanding, health issues and goals are then addressed

**CONTACT**

Office: 6300 9th Ave NE, Suite 200

Seattle, WA 98115

Phone: (206) 522-5646

Email: [fdvega51@gmail.com](mailto:fdvega51@gmail.com)



## What is the Moonpaper Tent?

**The Moonpaper Tent is a non-profit** creative arts studio and intimate theater that specializes in inspiring youth and adults alike. It is a non-biased mystical haven for exploring imagination and actualizing dreams.

Located at 918 NE 64<sup>th</sup> Street, their Mission is to provide unique theatrical and art based experiences to people of all ages that spark the imaginative process, inspire personal creativity, cultivate compassion, and validate the power of diversity and originality within community.

All of Moonpaper Tent's programming works to involve the student or guest in holistic and authentic experiences. Their programs are rich in creative drama, art and craftwork, storytelling, and magical realism. Creative visualization and mindfulness practice also intertwine with thematic undertones to create an environment of possibility.

The Moonpaper Tent has been in the Roosevelt neighborhood for 7 years, and is an evolving project created by Sylvan Bourgette: dedicated mother of 6, artist, believer in dreams, and self proclaimed possibilitarian. Her dedication and drive to establish a one of a kind creative arts venue proves unfaltering. A self taught visual and theater artist, Sylvan is continually striving to provide a dynamic base for budding imaginations by empowering young children, older youth, adults, and staff through process based art and interactive theater. Whether it is a family event or a workshop or class, follow the path to The Moonpaper Tent, where magic is alive and dream worlds exist!

[www.moonpapertent.org](http://www.moonpapertent.org)  
206-708-6741

**Thrive Café & Vitality Shop**

ORGANIC DAIRY-FREE  
GLUTEN-FREE RAW  
BLENDERS JUICERS  
DEHYDRATORS  
DESSERTS CHOCOLATES TREATS  
AND SO MUCH MORE ...

OPEN FOR  
BREAKFAST  
& LUNCH

**50% OFF**  
Any One  
Menu Item  
~ FOR ~  
First-time  
Customers  
Expires March 1, 2013

Thrive is located one block north of the Whole Foods Market at Roosevelt Square, at:  
**1026 NE 65th Street, #A-102  
Seattle, WA 98115**  
For call-in orders, dial:  
**(206) 525-0300**

[www.GenerationThrive.com](http://www.GenerationThrive.com)

THERE IS ALWAYS SOMETHING  
EXCITING GOING ON AT  
MOONPAPER TENT!

# It's the Giving Season!

We're giving **FREE** 1-gallon water jugs to our neighbors! Just stop by our store, introduce yourself, and receive your gift.

**Align Wellness**  
**6217 Roosevelt Way NE**

Details:

- limit one jug per household
- present this issue of the Roosie to receive your gift
- must sign up to receive occasional emails containing health tips, coupons, and free workshops
- offer expires 12/31/12
- no cash value



AlignWellness  
We Fix Bodies

# 1234567890

## Our World in Numbers

### 854,288

Participants who grew mustaches last November in the "Movember" effort to raise awareness of men's health issues. Founded in Melbourne, Australia, in 2004 with 30 participants, the movement has gone global, raising \$126.3 million in 2011 to aid charities dedicated to men's cancer initiatives.

### 5

Approximate speed, in miles per hour, at which gray whales travel during their annual winter migration from Alaska's Bering and Chukchi seas to the waters off Baja, Mexico, passing by Washington and Oregon coasts between mid-December and early February.

### 24

Number of "Whale Watching Spoken Here" sites along the Oregon coast, where trained volunteers help visitors spot the cetaceans during winter watch week, Dec 26-30.

### 46

Number of turkeys that have received a presidential pardon since President George H.W. Bush began the tradition in 1989. Each year since, the president has "pardoned" the national turkey and an alternate, designated in case the first bird can't fulfill its duties.

### 771

Weight, in millions of pounds, of cranberries produced in the United States in 2011, with more than half grown in Wisconsin, Oregon (36 million pounds) and Washington (11.5 million pounds) ranked fourth and fifth, respectively, among cranberry-producing states.

### 20

Diameter, in feet, of the world's largest pumpkin pie, baked in 2010 by the New Bremen Giant Pumpkin Growers in Ohio.

[www.AAAwashingtonjourney.com](http://www.AAAwashingtonjourney.com)

**HAPPY HOLIDAYS!**  
**FROM ANIMAL TALK RESCUE**



**ADOPT \* DONATE \* FOSTER**

6514 ROOSEVELT WAY NE  
ANIMALTALKRESCUE.ORG

## *'Twas the night before Christmas,*

when all through the house

Not a creature was stirring, not even a mouse;  
The stockings were hung by the chimney with care,  
In hopes that St. Nicholas soon would be there;  
The children were nestled all snug in their beds,  
While visions of sugar-plums danced in their heads;  
And mamma in her 'kerchief, and I in my cap,  
Had just settled our brains for a long winter's nap,  
When out on the lawn there arose such a clatter,  
I sprang from the bed to see what was the matter.  
Away to the window I flew like a flash,  
Tore open the shutters and threw up the sash.  
The moon on the breast of the new-fallen snow  
Gave the lustre of mid-day to objects below,  
When, what to my wondering eyes should appear,  
But a miniature sleigh, and eight tiny reindeer,  
With a little old driver, so lively and quick,  
I knew in a moment it must be St. Nick.  
More rapid than eagles his coursers they came,  
And he whistled, and shouted, and called them by name;

"Now, Dasher! now, Dancer! now, Prancer and Vixen!  
On, Comet! on, Cupid! on, Donder and Blitzen!  
To the top of the porch! to the top of the wall!  
Now dash away! dash away! dash away all!"  
As dry leaves that before the wild hurricane fly,  
When they meet with an obstacle, mount to the sky;  
So up to the house-top the coursers they flew,  
With the sleigh full of Toys, and St. Nicholas too.  
And then, in a twinkling, I heard on the roof  
The prancing and pawing of each little hoof.  
As I drew in my head, and was turning around,  
Down the chimney St. Nicholas came with a bound.  
He was dressed all in fur, from his head to his foot,  
And his clothes were all tarnished with ashes and soot;  
A bundle of Toys he had flung on his back,  
And he looked like a pedler just opening his pack.  
His eyes—how they twinkled! his dimples how merry!  
His cheeks were like roses, his nose like a cherry!  
His droll little mouth was drawn up like a bow  
And the beard of his chin was as white as the snow;  
The stump of a pipe he held tight in his teeth,  
And the smoke it encircled his head like a wreath;  
He had a broad face and a little round belly,  
That shook when he laughed, like a bowlful of jelly.  
He was chubby and plump, a right jolly old elf,  
And I laughed when I saw him, in spite of myself;  
A wink of his eye and a twist of his head,  
Soon gave me to know I had nothing to dread;  
He spoke not a word, but went straight to his work,  
And filled all the stockings; then turned with a jerk,  
And laying his finger aside of his nose,  
And giving a nod, up the chimney he rose;  
He sprang to his sleigh, to his team gave a whistle,  
And away they all flew like the down of a thistle,  
But I heard him exclaim, ere he drove out of sight,

**"Happy Christmas to all, and to all a good-night."**

*Clement Clark Moore.*

## PEAKS FROZEN TREATS, COFFEE & EATS

### **Happy Holidays Roosevelt!**

Chocolate Peppermint  
**Stick Crunch**

**Eggnog**



Check it all out at  
[www.peaksfrozencustard.com](http://www.peaksfrozencustard.com)

At Roosevelt Way & NE 65th St.  
1026 NE 65th St. | 206-588-2701

*locally sourced*



## Wayward Coffeehouse

Est. 2005

### **Best Coffee, Best Prices**

Casual, Friendly, Geeky

Open until 11 pm Every Night

Free Wireless Internet

**All Vegetarian & Vegan**

Organic, Fair Trade, Shade Grown

*Live Music & Events*

**Large Tables, Lots of Space**

**50¢ OFF**  
**Any Espresso Drink**

**Wayward Coffeehouse** SW Corner of 65th & Roosevelt  
**Mon-Fri: 630 a - 11 p / Sat-Sun: 7 a - 11 p**

[www.waywardcoffee.com](http://www.waywardcoffee.com)



## ROOSEVELT NEIGHBORHOOD ASSOCIATION

*encourages you to shop local this holiday season.*

### *Roosevelt Business District*

Cowen Park Grocery	Swedish Physicians
Cafe Racer	Safeway
Avis/Budget Car Rental	Ravenna Dental Clinic
Salvatore	Ride Bicycles
Savvy Nail Salon	Yellow Umbrella Massage
Die Bier Stube	The Fish Store
Community Fitness	TCA Architects
Definitive Audio	Eight Bells Winery
US Bank	Precision Audio
Zenith supplies	Align Wellness
Magnolia HiFi	Angie's Hair
Umpqua Bank	Seattle Healing Arts
Sleep Country	Yuen Lui
Dania	Hawthorne Stereo
Almvigs Home Center	Alexander's Bead Bazaar
Starbucks	Tokyo Sushi
Bartell Drugs	Derby Salon
Bella Cleaners	Evolve Hair and Art Salon
Habits	Ma-Mo
Sports Clips	Progressive Tech
Subway	Sunlight Café
Taco Del Mar	MoonPaper Tent
UPS Store	Bamboo Home
Mutiny Hall	Hoa Salon
Health Mutt	Heather's Flowers
Miele	Olympic Pizza
Salon Sava	10,000 Villages
Pies & Pints	Wayward Café
Happy Feet	Royal Palm
Rising Sun	Spex in the City
East West Bookstore	Caruh
Shoe Advantage	India Bistro
Teddy's	Roosevelt Dental Clinic
Peaks Frozen Custard	Kettlebilly
Thrive	Windermere Property Mgmt
Roosevelt Auto Parts	Poja
All Star Cleaners	Bus Stop Espresso
Intercommunity Peace	Shell Station
& Justice Center	Pho 655
The Johnson Partnership	Dream clinic
Atlantic Crossing	Rain City Burgers
Chilito's	Minshew Networks
Belle Marie	Oh Bella
Animal Talk	Spectacle
LA boxing	Bengal Tiger
Seattle Auto Service Center	Bank of America
Hermann Intentional Auto	Calvary Christian Assembly
Discovery shop	M'illumino
Allstate	Roosevelt Vision
Found It	Purple Moon Pilates
Rowland Studios	Perfect Wheels
Urban Self Storage	Vintage Customers
Econo-mini Storage	Marcello Ristorante Italiano
Esthetics International	New Discovery School
Wedell Auto	Louis Foreign Car Repair
Nancy Mercer ND	

## ROOSEVELT PARTNERS WITH GIFT LOCAL

### *The Roosevelt Neighborhood Association*

is excited to partner with *Seattle Good Business Network* in celebrating and raising awareness for Seattle's unique blend of local, independent businesses with Seattle's first-ever

### *Gift Local pledge campaign.*

Gift Local will invite Seattlites to pledge to spend a portion of their holiday dollars at three local businesses, with a goal to have 5,000 residents make the pledge. Gift Local pledgers will receive a "Thank You!" packet that includes special offers from participating businesses, making it easy to shop local. Choosing to shop with our local businesses keeps more jobs and income in our local economy, and keeps Seattle vibrant--making our neighborhoods, and the holidays, brighter for all of us. Please join us by making the pledge today at [www.gift-local.org](http://www.gift-local.org).

*Yes! I take the Gift Local pledge:*

**To make my community a great place to live, I will shop with at least three local independent businesses this holiday!**

*It's free to pledge!*

### Why Gift Local?

#### *#1: "It's the economy, \_\_\_\_\_"*

Because every dollar spent at a local independent business generates three times more income, wealth, and jobs than a dollar spent at a national chain. And that's good for Seattle.

#### *#2: Keep Seattle...Seattle!*

Local independent businesses give our city its unique personality and its vibrancy, making this an incredible and interesting place to live.

#### *#3: Lasting Prosperity*

Because a healthy, locally owned economy is resilient! And a resilient economy creates meaningful jobs and a more secure future.

#### *#4: We're in this Together*

Because we believe that when our friends and neighbors do well, we're all better off.

#### *#5: Relationships Matter*

Because nothing is more sparkly for the holidays than a sense that we are working as a community for a shared prosperity in the place we call home.

#### *#6: Perks!*

Dozens of local independent businesses want to thank you for making the pledge this holiday..

*Gift Local* is also having a friendly neighborhood contest. Register as a Roosevelt resident and let's show them what our little corner of Seattle can do!!



Seattle's best burger joint is now in the  
Roosevelt Neighborhood!



Happy  
Holidays!

YAAA!!!  
GIFT CARD  
IS  
AVAILABLE  
NOW

**Punch Card:** Buy 10 & Get any 1 burger for free  
10% discount for Neighborhood Employees & Employers  
Spend \$60, receive \$6 credit using "level Up"

Order To Pick up

(206) 525 3542

Opening Hours

11-9pm(Mon-Sat)

Location

6501 Roosevelt way NE

Seattle, WA 98115

Email

raincityburgers@gmail.

**www.raincityburgers.com**



Burgers



Fries



Shakes

## Progressive TECH

Seattle's Most Trusted Tech Support

Progressive Tech offers an impressive array of computer repair services, PC and Mac tech support, as well as website and graphic design services.

Client care and satisfaction, quality service, honesty, reliability and environmental care and responsibility are the pillars on which our business is built.

Located at 64th and Roosevelt.  
Open 7 days a week and walk ins are always welcome. Come say "hello" anytime!

**ProgressiveTech.com - 206-525-8324**



## 'A CHRISTMAS STORY QUIZ

TEST YOUR SKILL:

(ANSWERS AT BOTTOM OF PAGE)

1. In what state does this film take place?
2. In what decade?
3. What is the family's last name?
4. What did Ralphie's dad do with the leg lamp after it was broken?
5. What is Ralphie's favorite radio show?
6. What is the message Ralphie gets with his decoder pin?
7. What is Ralphie's younger brother's name?
8. What is the most serious of all dares?
9. What did Ralphie give his teacher for Christmas?
10. What grade does Ralphie get on his Christmas theme?
11. What is the name of the neighborhood bully?
12. What is the name of the boy who stuck his tongue to the flag pole?
13. What is the name of the soap used to wash out Ralphie's mouth?
14. What Christmas song is Ralphie, his brother and mother singing in the car when they get a flat tire?
15. What do they have for Christmas dinner?



Scott A. Schini, DVM  
Annie Dittrich, DVM  
Cheryl Meyers, DVM

1421 NE 80<sup>th</sup> St.  
Seattle, WA 98115  
Ph: 206-524-2020  
Fax: 206-985-4385

www.mapleleafvet.com  
mapleleafvet@gmail.com

"Friendly Neighborhood Pet Care"

*Indiana, 1940's, Parker, Buried it in the back yard, Little Orphan Annie, Remember to drink your Ovaltine, Randy, The Triple Dog, A fruit basket, C+, Scut Farcus, Flick, Lifebuoy, Jingle Bells, Duck*



Roosevelt Neighborhood Association, Business Committee

From left to right: Tim Wolfe Peaks Frozen Custard, Meko Krell Dream Clinic, Kmbri Bond Ten Thousand Villages, Ellen Blair sound Transit, Dil Maharjom Rain City Burgers, Frank Michiels 8 Bells Winery, Dan Morgan Teddy's, Rich Trifeletti Ten Thousand Villages, Sylvan Bourgette MoonPaperTent, Laura Vo Bus Stop Espresso, Stephen Rising TCA Architects, Susan McGinnis East West Bookshop, Tova Ramer Evolve Hair and Art Organic Salon, Martin Roth Progressive Tech, Michele Cole RNA-Marketing & Events Coordinator



## Eight Bells Winery

An Urban Winery, Making Artisan Wines  
6213B Roosevelt Way NE, Seattle, WA

### New Wine Release and Art Show

Saturdays, December 1, 8, & 15, 2012 (11:00 AM – 5:00 PM)

Featuring the work of local artist ~D.ita

Meet the artist – December 1, 2012

[www.8bellswinery.com](http://www.8bellswinery.com)

*Eight Bells Winery* is a small (less than 2000 cases per year) urban winery in the Roosevelt/Ravenna neighborhood of North Seattle producing hand-crafted red and white wines. Our first crush was in the fall of 2009 with grapes sourced from Eastern Washington and Western Oregon. For regular updates on our activities, or to learn more about us, we invite you to view our web pages at:

[www.8bellswinery.com](http://www.8bellswinery.com)

Andy, Frank, and Tim

**SportClips** provides men's haircuts in a unique, sports-themed environment. Our signature MVP Treatment features a precision haircut, steamed towel treatment and invigorating scalp massage all in a hassle-free, family-friendly setting. The experience features sports-themed décor, a big-screen TV in the lobby, and televisions at each haircutting station tuned to sports.

**Guy-Smart Stylists – Sports on TV – Open Every Day**

**SportClips®**  
HAIRCUTS

### Holiday Special

**50% OFF MVP Haircut for New Clients**

**\$12 Reg. \$24**

For First-time clients  
Through December 31, 2012  
FREE Upper Level Parking

Valid at this location only.  
Cannot be combined with other offers. Code 2075

**Roosevelt Square**

1029 NE 65<sup>th</sup> St.

(206) 525-2215

**Near Whole Foods**