



Learn this Important New Acronym: TOD

Transit-Oriented Development (TOD) refers to the utilization of real estate surrounding mass transit sites, such as the Roosevelt light rail station now under construction in our neighborhood.

What will become of the old QFC grocery store site which is now used for construction staging? Sound Transit purchased several parcels of land which are currently enclosed by a green wooden wall. By 2021 when the station opens, the construction walls will come down, two station entrances will be built along 12th Avenue NE, and the remaining property will be available for redevelopment.

To determine the ultimate usage of these properties, Sound Transit and the City of Seattle intend to engage the Roosevelt neighborhood to discuss our needs and interests. Other factors will also bear on the outcome of these TOD sites, three in all.

This short article is a prompt for you to be thinking about the types of services and facilities which you feel would complement Roosevelt Station. You'll read more about TOD and find opportunities for input in future issues of *The Roosie*.

Transit-Oriented Development (TOD) in Roosevelt is the next chapter in our urban village storybook. Done right, TOD affords the opportunity to create a true town center, the hub of a vibrant urban village. Another fascinating and important discussion awaits us.

Jim O'Halloran, former president of the Roosevelt Neighborhood Association.

RNA General Meeting: Tuesday, March 24, 2015

6:30 p.m. Social, 7:00 to 8:30 p.m. Presentation

Roosevelt Station 90% Design Update

CCA, Calvary Christian Assembly,

Roosevelt Way NE & NE 68th St. - east entrance.

RNA General Meetings are the fourth Tuesday of each month.

Next Meeting: April 28, 2015

RNA Committee Announcements and Updates

The RNA welcomes our new Vice President, business member, Stephen Fanelli. Stephen is the AVP Branch Manager of Umpqua Bank. He has also graciously offered to help *The Roosie* in communicating with advertisers.

Sustainability Group needs you to volunteer to help develop Emergency Preparedness planning in the neighborhood. We are looking for persons interested in or capable of working ham radios and developing a Communications HUB. We also need persons from each block, such as the block captains, to organize Seattle Neighborhoods Actively Prepare (SNAP) trainings (see *The Roosie*, February 2015). Contact Ellen Stoecker, Sustainability Chair, for more information. The Sustainability/Land Use committees meet on the second Tuesday evenings through June, at CCA, from 7:00 to 8:30 p.m.

Land Use Committee: The RNA Board has authorized a **Roosevelt Reservoir Committee** to research and share information about the potential changes at the reservoir site and to make recommendations to the Board. The committee intends to invite SPU staff to a meeting later this spring, after SPU's drinking-water study is complete. If you are interested in helping the committee in its work for the Board contact Ellen Stoecker, Secretary, at rna@rooseveltseattle.org. If you have recently tried to contact Ellen and have not heard back please try again.

The Roosevelt Business Group (RBG) hosted several guests from the Office of Economic Department of Seattle and Seattle Department of Transportation to discuss the businesses concerns regarding the repaving project proposed for Roosevelt Way this year along with updated schedule for installing the proposed bike lane. RBG also discussed topics for our future meetings, the Bull Moose Festival planning committee and the Weedin Place formal call to artists.

RNA General Meeting, Tuesday February 24th

Highlights of Roosevelt Repaving Project Presentation

"We are balancing all of the needs as we deliver this project", Scott Kubly, SDOT director.

- PBLs are lightning rod throughout the country
- Project hopes to minimize disruptions and It will save time and save money
- Everyone needs to use the roadway

"It is not about US and THEM" and the "value of life does not change based on mode of transportation",

Dawn Shellenberg, Community Engagement Liaison.

- Vision Zero, learn more at :
<http://www.seattle.gov/visionzero>
- Street designs were created for safety & predictability and targeted education is important
- Data-driven enforcement will be essential

Paul Elliott, Community Relations

- There are many non-bike elements of project (65th to Fuhrman). Bus reliability and speed will be increased
- Funding for in-lane bus stops has happened and LED streetlights will likely be funded
- 10-12,000 per day, 1100 bus riders, ~78 people on bikes per morning commute on Roosevelt

Additional Notes:

- Approximately 55 people in attendance, including residents of Greenlake, Wallingford, Ravenna, U District, Roosevelt

Project implementation Schedule:

- 60% design now, 90% by first week in March 2015
- Finalize by early summer with a summer meeting 2015 to explain about impacts of the project
- Construction to begin in late September with most work done from 9 a.m. to 3 p.m. (Weekend and night work is probable) in 5 phased sections
- Noise, light, dust, etc. will be disruptive
- Summer 2016 estimate for completion

To learn more about this project please visit: http://www.seattle.gov/transportation/pave_roosevelt.htm



Thinking of selling your home?



Ellen Hastings

206-650-6486

ellen@ellenhastings.com

ellen.lakere.com

Beyond Full Service!

- Free STAGING
- Free LANDSCAPING
- Free HOUSE CLEANING
- Free PHOTOGRAPHY



It doesn't get better than this!



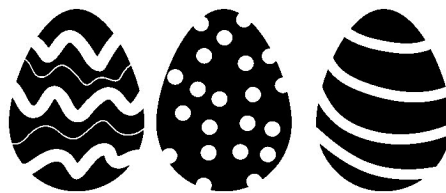
MAPLE LEAF
Veterinary
CARE CENTER

8626 Roosevelt Way NE, Seattle, WA 98115

Ph: 206.525.2020 * Fax: 206.985.4385

mapleleafvet@gmail.com

www.mapleleafvet.com



calvary christian assembly's
easter egg hunt
SUNDAY APRIL 5
9:30 am & 11 am

Join us for either service
Easter Sunday morning!
In both services, kids
ages 1-10 will enjoy:

- ✦ awesome egg hunts
- ✦ bunny photo op
- ✦ easter story
- ✦ fun music
- ✦ great games & more!

6801 ROOSEVELT WAY NE
206-525-7474

RNA Committee Announcements and Updates

Communications Committee

Thank you to G&H Printing for being reliable and supportive. Thank you to Ron Rundus and Holly Wade Matter for your graphic and editorial support for *The Roosie*.

Fundraising & Grants

A fundraiser will begin this year for the iconic sculpture that will be located at the gateway site, Weedin Place Project. For more information please contact Katie Wood, wood.kd2@gmail.com.

(Continued on Page 5)

the hope of
DELIVERANCE
EASTER SUNDAY | APRIL 5

TRADITIONAL SERVICE @ 9:30 AM | MODERN SERVICE @ 11 AM

CALVARY CHRISTIAN ASSEMBLY
6801 Roosevelt Way NE | ccassembly.org | 206.525.7474

Join us for this emphasis on restoration and wholeness.

LIFELINE

— HOPE FOR ADDICTION —

Each Sunday in April

9:30 AM TRADITIONAL SERVICE
11 AM MODERN SERVICE



CALVARY CHRISTIAN ASSEMBLY • 6801 ROOSEVELT WAY NE
ccassembly.org



Explore. Relax. Repeat.

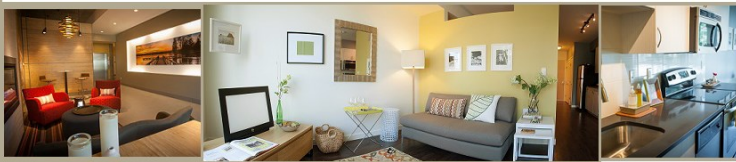
Pantry
Shefayoga
Dishwasher
Bicycle Storage
Walk Score of 95
Broadcast Coffee
Washer and Dryer
Granite Countertops
Stainless Appliances
Rooftop Deck with BBQ
Professionally Managed
Oversized Laundry Room

Newly Finished Studio,
One and Two
Bedroom Homes



shefayoga

ROOSEVELT



(206) 522-4600
www.KavelaApartments.com

Excerpt from Ravenna Blog's
LIVE BLOGGING of the
Roosevelt Station Open House
on February 25, 2015



Ravenna Blog's notes (excerpt):

► Station design for Roosevelt continues into the fall. Station excavation is ending, tunneling continues into 2016. Station construction after that, taking two years, and official opening still on for 2021 at this time.

► Transit-Oriented Development public engagement to begin in the fall of this year (large QFC parcel, and a few other parcels, now used for construction staging. Targeting 2018 to start competitive bid process, with hopes that land is available for developers in 2020.

► Utility moving near the station (65th and 12th) is completed, and street restoration has begun (street surface itself, plus surface around it.)

► Current work in the station box is preparing for tunnel boring machine arrival. Concrete bases have been poured where the first TBM (Brenda) will break through the north end of the station box in two weeks or so. Ring segments for the next portion of the tunnel down to the U-District Station are arriving in Roosevelt now.

► Contractor has decided to run all the tailings for the entire Northgate Link (Maple Leaf Portal to University of Washington Station) on conveyor belts all the way out through the Maple Leaf Portal. No muck trucks from Roosevelt, or U-District Station (once UD station box excavation is complete).

► How often will the trains run? Sound Transit will run four trains once the U-Link opens. With 62K riders per day by 2030. The frequency will increase over time with 4-6 minutes during peak periods and approximately 12 minutes during non-peak times.

To see photos of the Roosevelt Station and to read more, please visit Ravenna Blog:

<http://www.ravennablog.com/90-design-open-house-time-for-roosevelt-station/>

Other topics covered at the meeting included the architecture and art of the station. Questions and answers from the audience included topics like: turning left on 12th, Weedin Place, parking, bus stop changes, bike racks and bike share opportunities.

Subscribe today to "4 TO EXPLORE," a free neighborhood newsletter from your neighbor, Alex Pedersen, Former Seattle City Council Legislative Analyst. www.4toExplore.org



4 TO EXPLORE: YOUR NORTHEAST NEIGHBORHOOD NEWSLETTER

Seattle is truly a city of neighborhoods. Our neighborhoods in northeast Seattle - from Wallingford to Roosevelt to Windermere - are like treasures to discover each month when we just explore outside our front door.

This is "4 to Explore," a treasure map to 4 of the best things each month:

- 1 shop or restaurant to visit,
- 1 meeting to connect with neighbors,
- 1 fun activity to enjoy, and
- 1 neighborhood issue to engage.

Visit our new website www.4toExplore.org and enjoy exploring!



Alex Pedersen, Former City Council Legislative Analyst, and his family in Ravenna Park

www.4toExplore.org

Seattle-King County Advisory Council for Aging & Disability Services

The Seattle-King County Advisory Council for Aging & Disability Services is a dedicated volunteer citizens group which represents older adults and individuals with disabilities within our community. Their mission is to: 1. Identify the needs of older people and adults with disabilities in our community. 2. Advise on services to meet these needs 3. Advocate for local, state and national programs that promote quality of life for these populations. To learn more visit: <http://www.agingkingcounty.org/advisory-council>.

Aging Your Way

Aging Your Way (AYW) is sponsored by Senior Services. It started out as an initiative. It's now a full-on movement to engage community in building reciprocity and resilience so we all have great places in which to age. AYW does this by inspiring community at neighborhood events and conferences to get involved in concrete, community-driven projects that help us all get to know our neighbors and become interdependent. To find out how you might help, please visit: <http://seniorservices.org/agingyourway/GetInvolved.aspx>.

North East Seattle Together:

Many Neighbors, One Village

What is NEST? North East Seattle Together builds a sustainable, inter-generational community that supports neighbors in growing older together with confidence, joy and peace of mind.

To do this, NEST does three things. 1. Matches members with volunteers to assist with daily tasks like transportation, household tasks, and staying physically active. 2. Organizes events and activities for learning and fun. 3. Maintains a list of pre-screened professionals and discounts at local businesses. Within NEST each person has something to give, and everyone benefits. To find out more visit: <http://nestseattle.org>.



RNA Committee Announcements and Updates

Weedin Place Project: Call to Artists (<http://rooseveltseattle.org/weedin-place/weedin-place-call-to-artists/>)

Application Deadline: 12:00 p.m., Monday, March 23, 2015 (Pacific Standard Time). The Weedin Place Steering Committee of the Roosevelt Business Group (within the Roosevelt Neighborhood Association) seeks an artist or artist team to create public artwork that will serve as a gateway to Seattle's Roosevelt neighborhood. If you have questions please email project manager Klara Glosova, weedinplace@rooseveltseattle.org.

Community Events and Culture Committee: Bull Moose Festival

A committee is forming to plan the 2015 Bull Moose Festival. If you are interested in participating on this committee contact Rich Trifeletti, seattle@tenthousandvillages.com.

Transportation Committee

The Roosevelt Neighborhood Association Transportation (RNAT) Committee is focusing on four key areas: roads, bikes, parking, and pedestrians. One hot topic is the Roosevelt Way NE Paving Project (www.seattle.gov/transportation/pave_roosevelt.htm). Please contact Peter James, rnapeter@gmail.com, for more information.

Neighborhood Design Guidelines

If you felt inspired by Jim O'Halloran's article to get involved with shaping Transit Oriented Development (TOD) please contact Jay Lazerwitz, jay@artandarch.net.

Roosevelt Neighborhood Association (RNA) Purpose Statement :

The principal aims and objectives of the RNA-Seattle are to educate, engage, and empower those living in or in close proximity to the Roosevelt neighborhood of Seattle regarding issues of importance to the neighborhood described in the Roosevelt Neighborhood Plan that was adopted by the Seattle City Council.

Spring is in the air!

Multiple offers, pre-inspections, and homes selling for over-asking price is the trend again this year. The weather is turning and we're seeing an increase in open house traffic and buyers are getting a jump on the spring/summer market! It has become the norm again for multiple offers, pre-inspections, and bidding wars especially in our neighborhood.

You might ask, why are the homes in our neighborhood in such demand? Why are prices going up so fast? The answer is simple- supply and demand! People want to live in this awesome neighborhood. They want the walk-ability, they want the easy access to the freeways, they want to be in the middle of all the changes coming to the area, they want to stay local, they want the sense of community, they want what we have!

Along with supply and demand, people's sense of the "American Dream" has shifted. People are realizing the big house in the burbs means never ending maintenance and long honey-do lists. With longer commute times, longer work hours, running errands, and endless house projects, it leaves less time for family and friends. Times are changing and people are coming back to the city.

If you're interested in buying, selling, or investing in real estate I would be honored to work with you. I have over 15 years of experience in real estate and I feel confident that I will exceed your expectations. If you've been thinking about selling, I have qualified buyers who are eager to move into the neighborhood.

John L. Scott®
REAL ESTATE

Jeff Sievers • 206-391-1200
jeff@jeffsievers.com

Dear Roosevelt Neighborhood,

We have a wonderful community and an amazing group of folks engaged with our neighborhood association. South Transit will present their 90% design updates for Roosevelt Station at our next general meeting on March 24, 2015. Planning for the 2015 Bull Moose Festival has begun, a committee has formed to discuss the Roosevelt Reservoir, a fundraiser will begin this year for the iconic sculpture that will be located at the gateway site, Weed in Place Project... and all that is happening in your neighborhood could use your support.

Please "Save the Date" for upcoming events by writing it on your calendar or cut out our general meeting reminder on the front page and tape it to your fridge! If you look forward to getting *The Roosie* on your doorstep each month, please support it by becoming an RNA member. The form below states recommended amounts but the RNA will accept any donation.

Please subscribe to our website blog: <http://www.rooseveltseattle.org> and follow us on Twitter: @roosieseattle. Engage with your neighbors on our Facebook page: <http://www.facebook.com/groups/RooseveltSeattle>.

Thank you for supporting this fantastic neighborhood.

Laura Bernstein, RNA Communications Committee Chairperson & Editor, *The Roosie*



ANNUAL RNA MEMBERSHIP FORM

\$_____ Student / Low Income **\$20 = Individual** **\$35 = 2-Person Household** **\$95 = Business Member**
(pay what you can) \$_____ Other Tax Deductible Donation

Name(s): _____

Address: _____

Phone Number: _____ Email Address: _____

Special Interest: _____

_____ **Yes! I would love to be a Blockhead and help distribute *The Roosie*.**

_____ **Yes! I would love to place an ad to support *The Roosie*.**

Please make check payable to: *The Roosevelt Neighborhood Association* & Mail to: 6910 Roosevelt Way NE, Box #518, 98115