

The Roosie

Roosevelt Neighborhood Association Newsletter

Sagar Ramachandra—Editor

October 2016

<http://rooseveltseattle.org>

UW Campus Master Plan Update

By Scott Cooper, RNA President

Every 10 years or so the University of Washington updates its Campus Master Plan (CMP), the document that dictates the growth and development of the campus for the following 10 to 15 years. This update is again underway, with the release of the draft CMP and accompanying environmental impact statement (EIS) on October 5th. The CMP is available for review, with public comment open for 45 days after its release, until roughly November 21st.

The draft CMP projects the growth of the UW student body and faculty and estimates the amount of space that will be needed to accommodate this growth over the next 10+ years at 6 million gross square feet. Based on this projection the CMP identifies specific building sites within the campus to meet this growth allowance, broken down into Central, South, West, and East Campuses.

In brief, West Campus (west of 15th Ave NE) is expected to take approximately half of the projected growth. This will be accomplished through a number of identified building sites and an increase in height to a maximum of ~240' in some cases. South Campus (south of NE Pacific St) follows with ~25% of the projected growth in and around the UW Medical Center. The remaining growth is split between East Campus (east of Montlake Blvd NE) and Central Campus, though growth within Central Campus would be largely around the perimeter and not the core of older historic buildings. It is also important to note that the draft CMP identifies all of the *potential growth sites, only a portion of which will ultimately be developed. The building heights,*

massing, and usage will be determined one by one as the sites are developed in the future.

There are a number of ways to comment on the draft CMP and EIS. The documents will be available at <http://pm.uw.edu/cmp/about> and there will be online open houses, drop-in locations/hours for questions/comments, and presentations. Public comment can be made online. The Roosevelt Neighborhood Association is also a part of the City/University Community Advisory Committee (CUCAC), which is tasked with providing public comment on the CMP with an emphasis on its impact on the neighboring communities and city at large. Comments can also be sent to president@rooseveltseattle.org to be incorporated into the CUCAC comments. You can also attend the public hearing for the CMP will be on:

October 26th, 2016

6:30 to 9:00 PM

UW Tower, Auditorium
4333 Brooklyn Ave NE



SDOT Roosevelt Repave Celebration:

Saturday, November 5th, 2016

U-District Food Bank, 5017 Roosevelt Way NE

<http://seattle.gov/transportation/events>

RNA General Meeting:

Tuesday, October 25th, 2016

6:30 p.m. Social, 7:00 to 8:30 PM Presentation

Agenda Topics: Sound Transit 3

CCA, 68th & Roosevelt, Upper Level

Community Feedback Needed

Seattle, and along with it, Roosevelt is growing and developing rapidly. The City would like to know what you think. Whether you have concerns about housing, development, parks, homelessness, transit, roads, or something else, your feedback is important.

Have your voice heard. For a full list of projects open for public comment, visit

<http://www.seattle.gov/neighborhoods/programs-and-services/outreach-and-engagement/add-your-voice>

If you do not see a survey related to your issue, contact Rob Johnson, our District 4 City Council Representative with your comments. [206-684-8808](tel:206-684-8808) / rob.johnson@seattle.gov

Land Use Updates

By Jay Lazerwitz, Land Use Committee Chair

Address	Property Name	# Units	# Parking	Const_Begin	Const_End	TYPE
7012 Roosevelt Way NE		29	0		TBD	X
222 NE 65th Street	Brooklyn Flats	55	0	12/16/16	12/16/17	X
6516 12th Avenue NE	Roosevelt I	220	150	2/1/16	7/1/17	U
6502 15th Avenue NE		101	77		TBD	X
1300 NE 65th Street		124	100		TBD	X
6717 Roosevelt Way NE		106	38		TBD	X
811 NE 66th Street		20	0		TBD	X
831 NE 66th Street	Formosa Roosevelt	29	0	6/1/16	1/1/19	X
6921 Roosevelt Way NE	Roosevelt 1	71	0	10/1/16	10/1/17	X
7011 Roosevelt Way NE		59	0	9/1/16	12/1/17	X
814 NE 66th Street	Iron Flats	304	270	1/1/17	10/1/19	X
6800 Roosevelt way NE	Medora	79	64	8/1/15	1/1/17	U
6105 Roosevelt Way NE	NOVO	105	24	6/1/16	8/31/17	M
6404 9th Avenue NE	LIV Roosevelt	81	5	8/1/16	1/1/18	U
836 NE 67th Street	Maude	75	0	8/1/16	8/1/17	U
800 NE 67th Street	Eleanor	260	220	8/1/14	6/1/16	A
836 NE 66th Street	Roosevelt 2	75	0	2/1/17	2/1/18	X
900 NE Ravenna Blvd	Ravenna Court	16	0	8/1/14	5/1/16	M

1809 948

TYPE: m = congregate, u = under construction, x = planned.

This list does not include completed projects.

Thanks to Dupree-Scott for this information

We are working on a study-plan for affordable housing to be part of the redevelopment of the Sound Transit construction site. We hope to have a grant awarded in early November to engage a developer to assist the community in studying the various types of units and resident mix that would make this project most successful. Along with the new housing, we will also be proposing community and social programming for the site. The grant will provide monies for professional assistance, to review potential funding, and survey the neighborhood for ideas and desires. Come to a Land Use meeting if you are interested in assisting with this project.

We are in the early stages of planning another Land Use Academy session; this one to focus on the High School blocks; review the Neighborhood Design Guidelines, to review what has worked, and what needs more attention; engage the developers on current and future needs of the community.

The RNA board is looking for a treasurer, and the Land Use comm. needs financial oversight for a 'potential' federal grant. If you have experience in accounting, and especially Section-4 Affordable housing, your involvement would be invaluable to our current project/s.

Land Use committee meetings are on 2nd Tuesdays at 7 PM at the CCA 6801 Roosevelt Way NE, Rm 317.

Water Conservation Program

Seattle Public Utilities

Would you like to save money and help the environment? Seattle Public Utilities Water Conservation Program can help you do both! Partnering with Sound Generations Minor Home Repair program, the Water Conservation Program will install water-saving toilets in your home and recycle your old toilets at no charge to you. To be eligible, you must receive a Seattle Public Utilities water bill, live in the home you own, have toilets that were installed before 2004 and meet income guidelines.

Interested? Call Sound Generations at 206-448-5751 or visit <http://www.seattle.gov/util/FreeToilets> to get started!

Subscribe today to "4 TO EXPLORE," a free neighborhood newsletter from your neighbor, Alex Pedersen, Former Seattle City Council Legislative Analyst. www.4toExplore.org



4 TO EXPLORE: YOUR NORTHEAST NEIGHBORHOOD NEWSLETTER

Seattle is truly a city of neighborhoods. Our neighborhoods in northeast Seattle - from Wallingford to Roosevelt to Windermere - are like treasures to discover each season when we just explore outside our front door.

This is "4 to Explore," a treasure map to 4 of the best things each season:

- 1 shop or restaurant to visit,
- 1 meeting to connect with neighbors,
- 1 fun activity to enjoy, and
- 1 neighborhood issue to engage.

Visit our new website www.4toExplore.org and enjoy exploring!



Alex Pedersen, Former City Council Legislative Analyst, and his family in Ravenna Park

www.4toExplore.org

Kavela

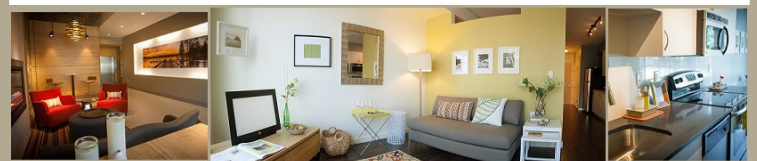
Explore. Relax. Repeat.

Pantry
Shefayoga
Dishwasher
Bicycle Storage
Walk Score of 95
Broadcast Coffee
Washer and Dryer
Granite Countertops
Stainless Appliances
Rooftop Deck with BBQ
Professionally Managed
Oversized Laundry Room

Newly Finished Studio,
One and Two
Bedroom Homes



shefayoga



(206) 522-4600
www.KavelaApartments.com

Weedin Place Gateway Roosevelt Glacier

By Katie Wood, Weedin Place Steering Committee

An Open House was held at Bus Stop Espresso & Gyros on Sunday, October 2nd to share the current status of the Weedin Place Gateway project. Thanks to everyone that stopped in and a special thanks to Bus Stop Espresso for their warm hospitality.

After a couple years of working on concepts, designs, and construction docs, the project is ready to implement Phase 1 designs. The full plans for the space include landscaping and public art to create a glacial landscape.

The concept of the Roosevelt Glacier is significant to the neighborhood on several levels. Glaciers change the landscape forever as they carve through an area – the Roosevelt neighborhood is constantly changing. The Roosevelt Glacier is also a nod to Teddy Roosevelt, our neighborhood's namesake, who was a great conservationist with our National Parks.

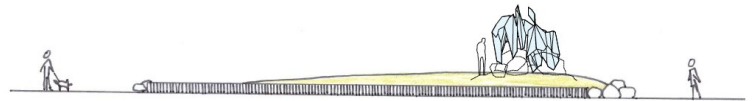
Also, serendipitously, after the project had begun, we learned that the Wedgewood Rock (once called Lone Rock), deposited by a glacier (erratic), was located on William Weedin's property – at that time, it was dense forest, but community members would use it as a meeting space for community get-togethers.

The physical space is important to the neighborhood as a public amenity that will improve vehicular and bike safety as well as improve walkability in the area, putting more eyes on the street and reducing unwanted behavior.

Full implementation will depend on funding. The project currently has enough funds to implement Phase 1, which will include closing Weedin Place to thru traffic, painting the street, placing a few small boulders (erratics) on site, doing a few plantings, and installing the appropriate traffic control measures required by the City.

The newest estimate for implementation is this month, with a community party on location in the spring of 2017. If you are interested in painting the street or helping with plantings at a community event, please get in touch at weedinplace@rooseveltseattle.org.

For more information, visit <http://rooseveltseattle.org/weedin-place/>.



HARVEST CARNIVAL

FREE Community Event

October 31st from 6 – 8^{pm}

Inflatables • Candy • Games • Prizes



Calvary Christian Assembly
6801 Roosevelt Way NE • Seattle • ccassembly.org

RNA Opportunities

Roosie Ad Manager—Neighborhood volunteer needed for 5-10 hrs/month. Duties include soliciting ad copy and payment from local businesses. 9 editions/yr. Will train.

rna@rooseveltseattle.org

RNA Board Members—Volunteers interested in the neighborhood association are urged to contact Ellen at rna@rooseveltseattle.org

Attention High School Students—New opportunity for service learning hours. Are you interested in your local neighborhood development, business, economics, or research? The Roosevelt Business Group needs your help documenting and mapping the businesses and vacancies in the neighborhood. If interested, please contact vp-business@rooseveltseattle.org

Weedin Place Street Painting—Sign up as a volunteer with the community project to paint Weedin Place and participate in the community celebration.

Email weedinplace@rooseveltseattle.org

RNA Treasurer—RNA seeking board treasurer to start in June. Volunteer position - 10 hrs/month. Small org./light duties. rna@rooseveltseattle.org

Roosie Distribution—Volunteer needed to deliver newsletters to neighbors. Various routes available to fit your level of time commitment. Contact Gina at blockhead@rooseveltseattle.org

RNA Events Comm. Chair—Neighborhood volunteer opportunity to lead the small events and culture committee. Time commitment depends on events - may average 10+ hrs/week. rna@rooseveltseattle.org

Become an RNA Director

The neighborhood association would like to invite anyone interested in the future of the neighborhood to join the RNA and volunteer to become a Director or Committee Chair. The RNA encourages representation as diverse as our neighborhood. Apartment dwellers, renters, home owners, business owners, non-profits, and employees working in the neighborhood are all welcome! The available volunteer positions, requiring about 10 hours/month, are:

- **Treasurer**
- **Events/Culture Committee**
- **Communications Committee**
- **Membership Committee**

If this isn't your cup of tea, but you still want to get involved, contact us at rna@rooseveltseattle.org or visit our calendar of events to join us!

CELEBRATE ROOSEVELT

Getting around town is getting easier

Thanks for your patience during Roosevelt Paving & Safety Project construction. Come to our free event with food to talk about how getting around your neighborhood can be easier and win cool prizes by supporting local businesses.

Please also help your local food bank serve the community and bring new, unused toiletry donations to this event.

SATURDAY, NOVEMBER 5
11 AM - 1 PM
U DISTRICT FOOD BANK
5017 ROOSEVELT WAY NE



City of Seattle



OTHER PARTICIPANTS: ROOSEVELT NEIGHBORHOOD ASSOCIATION, SEATTLE NEIGHBORHOOD GREENWAYS, CASCADE BICYCLE CLUB

Curb Ramps: How You Can Help Make a Difference

Seattle Department of Transportation

The City of Seattle strives to make city programs, services, and activities equally accessible to all. Features such as curb ramps, ramps, sidewalks, detectable warnings and street crossings are components of an accessible pedestrian network.

Curb ramps are an important part of helping many people where they need to go. They make our streets and sidewalks accessible by ramping down to connect with crosswalks. Curb ramp design and construction includes a ramp with a tactile warning surface, landings, and necessary sidewalk transitions and minor utility modifications. This is especially important for people who use wheelchairs or other mobility devices.

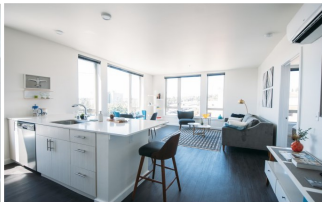
If you have any questions about accessibility within the Seattle public right-of-way, we encourage you contact SDOT's ADA Coordinator, Michael Shaw. He can be reached at (206) 615-1974 or by email at Michael.Shaw@seattle.gov.



Now Leasing Brand New

Studio, One Bedroom, Two Bedroom, and Loft Homes

- Prime location near Green Lake in the heart of Roosevelt
- Rooftop terrace with giant Scrabble and BBQ's
- Pet Salon
- Common area Wifi
- Community Lounge featuring shuffleboard and pool tables
- Fully equipped Fitness Center
- Bicycle parking and repair



EleanorApartments.com | 800 NE 67th Street Seattle, WA 98115 | 206.517.9935

Thinking of Selling?

Free Staging, Free Landscaping, Free House Cleaning, Free Photography



Ellen Hastings & Dida Lopez
206-650-6486
ellen@theloonteam.com
theloonteam.com



Let's talk timing.

Roosevelt Business Group Members

The Johnson Partnership	1212 NE 65th St	Seattle, WA 98115
Umpqua Bank	6402 Roosevelt Way NE	Seattle, WA 98115
Roosevelt Vacuum Center	1209 NE 65th St	Seattle, WA 98115
Roosevelt Chiropractic	5029 Roosevelt Way NE	Seattle, WA 98105
Roosevelt Vision	7001 Roosevelt Way NE	Seattle, WA 98115
Health Mutt	1207 NE 65th St	Seattle, WA 98115
4toExplore	2111 NE Ravenna Blvd	Seattle, WA 98105
Sound Transit	401 S. Jackson St	Seattle, WA 98104
Calvary Christian Assembly	6801 Roosevelt Way NE	Seattle, WA 98115
8 Bells Winery	6213B Roosevelt Way NE	Seattle, WA 98115
Lake & Company Real Estate	7801 Green Lake Dr N	Seattle, WA 98103
Scott & Suzanne Jamieson	19030 11th Ave NW	Shoreline, WA 98177
LIV Roosevelt, LLC	3445 California Ave SW, Suite A	Seattle, WA 98116
Maple Leaf Veterinary	8626 Roosevelt Way NE	Seattle, WA 98115



MAPLE LEAF
Veterinary
CARE CENTER

8626 Roosevelt Way NE, Seattle, WA 98115

Ph: 206.525.2020 * Fax: 206.985.4385

mapleleafvet@gmail.com

www.mapleleafvet.com

Get Involved!

Please contact the RNA to share your skills and learn more about your neighborhood.

<u>Name</u>	<u>Officer/Director</u>	<u>Email</u>
Scott Cooper	President	president@rooseveltseattle.org
Stephen Fanelli	Vice President Business	vp-business@rooseveltseattle.org
	Business Membership	membership@rooseveltseattle.org
Scott Montagne	Vice President Residential	vp-residential@rooseveltseattle.org
	Residential Membership	membership@rooseveltseattle.org
Mark Konings	Treasurer	treasurer@rooseveltseattle.org
Ellen Stoecker	Secretary	secretary@rooseveltseattle.org
Adrienne Slaughter	Sustainability / Emergency Prep	sustainability@rooseveltseattle.org
Katie Wood	Fundraising & Grants Chair	fundraising@rooseveltseattle.org
Tom Wilson	Officer	director@rooseveltseattle.org

<u>Name</u>	<u>Committee Chairs</u>	<u>Email</u>
Adrienne Slaughter	Sustainability / Emergency Prep	sustainability@rooseveltseattle.org
Peter James	Transportation (RNAT)	transportation@rooseveltseattle.org
Gina Leone	Head Blockhead for <i>The Roosie</i>	blockhead@rooseveltseattle.org
Jay Lazerwitz	Land Use	landuse@rooseveltseattle.org
Jim O'Halloran	Land Use Special Projects	lua@rooseveltseattle.org
Sagar Ramachandra	Editor, <i>The Roosie</i>	roosieeditor@rooseveltseattle.org
Stephen Fanelli	Roosevelt Business Group	business@rooseveltseattle.org

Scott Cooper represents the RNA on the UW City/University Community Advisory Committee (CUCAC).
Katie Wood represents the RNA at Northeast District Council meetings (NEDC).

Please follow the RNA on Twitter: [@roosieseattle](https://twitter.com/roosieseattle)

Subscribe to the RNA website blog at: RooseveltSeattle.org

Join the conversation with your neighbors at: Facebook.com/groups/RooseveltSeattle/

We need your help today. Please volunteer to deliver or contribute articles to *The Roosie*.

If interested, please contact: RoosieEditor@RooseveltSeattle.Org

ANNUAL RNA MEMBERSHIP FORM

\$_____ Student / Low Income \$20 = Individual \$35 = 2-Person Household \$95 = Business Member
 (pay what you can) \$_____ Other Tax Deductible Donation

Name(s): _____

Address: _____

Phone Number: _____ Email Address: _____

Volunteer Skill(s) / Area(s) of Community Interest: _____

- ☐ I would love to pay annual membership dues to support increasing RNA's outreach and community events.
- ☐ I enjoy receiving *The Roosie* at my door and will donate my time to deliver to others by being a "Blockhead".
- ☐ Please enter my email address to the <http://www.RooseveltSeattle.org> blog email list.
- ☐ Yes! I would love to place an ad to support *The Roosie* (Discounts for members!).
- ☐ Please welcome me, by name, as a new or renewing member on the website/twitter/facebook/next issue of *The Roosie*.

Please make check payable to: The Roosevelt Neighborhood Association: 6910 Roosevelt Way NE, #518, Seattle, WA 98115

OR *New* Pay your membership dues online at RooseveltSeattle.org/Membership/