

The Roosie

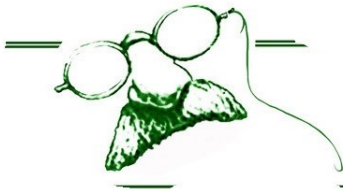
Roosevelt Neighborhood Association Newsletter

Laura Bernstein—Editor

April 2015

<http://www.rooseveltseattle.org>

Let's Make Roosevelt Shine!



Please join the Roosevelt Sustainability Group and Whole Foods Market, on Saturday April 25th, for a spring community cleanup event, 9 a.m. to noon!

Check in at Whole Foods Market on NE 64th St at 9 a.m. to gather your supplies. Cleanup equipment, gloves, and garbage/recycle bags all provided by Seattle Public Utilities.



Please join us in making our community sparkle! Rain or Shine!

If you have questions, contact Ellen Stoecker at emstoecker@comcast.net.

Emergency Preparedness

Hub-a-thon! Take part in a virtual meet up and find out who has formed a neighborhood SNAP group, Block Watch or Hub. Contact neighborhood leaders directly from an online map. Sign up for the SNAP distribution list for updates on Hub events.



<http://www.seattle.gov/lists/eocsnap.htm>

RNA General Meeting: Tuesday, April 28, 2015

6:30 p.m. Social, 7:00 to 8:30 p.m. Presentation

Earth Day

CCA, Calvary Christian Assembly,

Roosevelt Way NE & NE 68th St. - east entrance.

RNA General Meetings are the fourth Tuesday of each month.

Next Meeting: May 26, 2015

RNA Committee Announcements and Updates

News on Weedin Place:

We received a \$25,000 Small and Simple Grant in March 2015 from the Department of Neighborhoods to finalize the landscaping design work. That means we are funded through 2015 and are focusing our efforts on 2016. The RNA presented to the Northeast District Council (NEDC) and was voted to be considered for the Neighborhood Park and Street Fund Grant as an alternate. We hope to be awarded this grant! For more information please visit <http://rooseveltseattle.org/weedin-place/>.

Transportation Committee

The Roosevelt Neighborhood Association Transportation (RNAT) Committee is focusing on four key areas: roads, bikes, parking and pedestrians. Read a statement from RNAT on the Roosevelt Repaving Project and expanded protected bike lane (PBL), page 8, *The Roosie*, April 2015.

Community Events and Culture Committee:

Bull Moose Festival

Please join the committee to plan the 2015 Bull Moose Festival. If you are interested in participating contact Rich Trifeletti, seattle@tenthousandvillages.com.

Volunteer opportunities & RNA Board Elections

To learn more about how you can help your community follow us on Twitter, @roosieseattle, and subscribe to our website blog, <http://www.rooseveltseattle.org>. The RNA has a variety of open board member positions. Our RNA board member elections are in May!

Contact rna@rooseveltseattle.org for more info.

SMALL BUSINESS FEATURE

Bud's Rising Sun Produce by Doug Thiel

Once upon a time the intersection at 15th NE and NE 65nd had service stations on three corners. One became a coffee shop, another a pizza shop and the third, **Rising Sun Produce**. Bud Goodwin proprietor.

So how did a Mobile Service station become a fruit and veggie stand? Here's the story.

Early in 1979 Bud started selling fruit, vegetables and cordwood, added for winter sales, at the very spot that Mobile service station once stood.



Next spring Bud purchased fruit and veggies from Yakima growers: asparagus, cherries, spuds, Walla Walla sweets, berries and all the rest you've seen shopping there. The neighborhood response was super. And so he added Christmas trees. Another happy hit.

Soon business required Bud to add local wholesalers in addition to his Yakima contacts who serviced him. And so we've all noticed that the **Rising Sun** has moved across the street, new building and all. I had no trouble finding it.

Bud and I have become good friends during the years I've shopped at the **Rising Sun** to pick up groceries and have a chat with him. Bud tells good stories and laughs a lot. If he listens to mine, he'll listen to yours.



Meet Roger Scott

Roger Scott, principal and owner of Scott Value Investing, has thirty years of investing experience. Roger holds Bachelor's and Master's degrees from the University of Washington

and has been a CERTIFIED FINANCIAL PLANNER™ since 1985.

Roger Scott CFP®, MPA

Scott Value Investing

Seattle, Washington | 206.579.8361

Roger@scottvalueinvesting.com



Thinking of selling your home?



Ellen Hastings

206-650-6486

ellen@ellenhastings.com

ellen.lakere.com

Beyond Full Service!

- Free STAGING
- Free LANDSCAPING
- Free HOUSE CLEANING
- Free PHOTOGRAPHY



It doesn't get better than this!



MAPLE LEAF
Veterinary
CARE CENTER

8626 Roosevelt Way NE, Seattle, WA 98115

Ph: 206.525.2020 * Fax: 206.985.4385

mapleleafvet@gmail.com

www.mapleleafvet.com



Explore. Relax. Repeat.

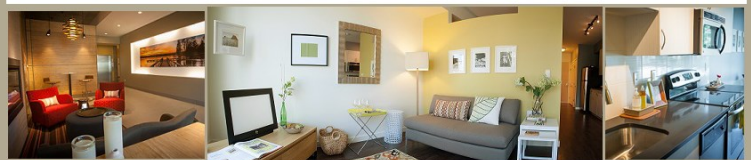
Pantry
Shefayoga
Dishwasher
Bicycle Storage
Walk Score of 95
Broadcast Coffee
Washer and Dryer
Granite Countertops
Stainless Appliances
Rooftop Deck with BBQ
Professionally Managed
Oversized Laundry Room

Newly Finished Studio,
One and Two
Bedroom Homes



shefayoga

ROOSEVELT



(206) 522-4600
www.KavelaApartments.com

Citywide Events Calendar

The Seattle.gov Event Calendar is a feature of the City of Seattle's web site which allows the City and community to post events in a common location to be viewed by the general public. You can filter by types of events or search for a particular day. This is a wonderful resource if you have guests from out of town. <http://www.seattle.gov/living-in-seattle/event-calendar>

Public Outreach Calendar

Visit this calendar monthly if you want to make a commitment to your community through engaging about public safety, emergency preparedness, neighborhood council meetings, city-hosted public information events, light rail station open house, environmental cleanup days and more!

<http://www.seattle.gov/living-in-seattle/event-calendar/public-outreach-and-engagement-calendar>

Seattle City Council Districts

This year, voting for Seattle City Council positions will be by district, a result of a measure Seattle voters passed in 2013. In the upcoming primary and general elections, voters will elect seven out of nine councilmembers by district. The remaining two positions (8 and 9) will be elected "at large" (citywide). Find out what district you live in at the King County Lookup Tool. Roosevelt will vote for citywide candidates and a local candidate for District 4.

<http://www.seattle.gov/cityclerk/municipal-code-and-city-charter/council-districts>



Subscribe today to "4 TO EXPLORE," a free neighborhood newsletter from your neighbor, Alex Pedersen, Former Seattle City Council Legislative Analyst. www.4toExplore.org



4 TO EXPLORE: YOUR NORTHEAST NEIGHBORHOOD NEWSLETTER

Seattle is truly a city of neighborhoods. Our neighborhoods in northeast Seattle - from Wallingford to Roosevelt to Windermere - are like treasures to discover each month when we just explore outside our front door.

This is "4 to Explore," a treasure map to 4 of the best things each month:

- 1 shop or restaurant to visit,
- 1 meeting to connect with neighbors,
- 1 fun activity to enjoy, and
- 1 neighborhood issue to engage.

Visit our new website www.4toExplore.org and enjoy exploring!



Alex Pedersen, Former City Council Legislative Analyst, and his family in Ravenna Park

www.4toExplore.org

eleanor

A P A R T M E N T S



Introducing Eleanor

Located at 800 NE 67th - Eleanor is a 267 apartment-unit community with an emphasis on the walkability of the Roosevelt neighborhood and its proximity to Green Lake.

The project combined thirteen parcels to create a design that emphasizes the neighborhood's popular pedestrian ambiance with extensive landscaped exterior spaces for a growing urban village. Rather than one large building, the project is separated into two residential buildings creating a garden courtyard with a woodland boardwalk, water features and plant life that will invite pedestrians to meander from one corner of the site to the other.

Right now you can see the forms of the two buildings taking shape as the excavation is completed and the construction is underway.

At Mack Urban, it's important to us that we keep you updated about the project as it takes shape. Via the Roosie, we plan to share design elements and answer frequently asked questions. More to come.



HEWITT



Good-bye from the Discovery Shop

Dear Roosevelt Neighbors,

We are sorry to say good-bye. We have been here at 6815 Roosevelt Way NE since 1976 when the shop was opened. Operated by volunteers, the Discover Shop has been raising money for the American Cancer Society's research, education and service programs. Soon our building will be torn down and we have not been able to find a place to relocate. Please come and say good-bye and take advantage of STORE-WIDE SALES now through our closing on May 30st, 2015. Until then our store hours are Monday-Saturday 9:00 a.m. - 4:00 p.m.

The American Cancer Society Discover Shop volunteers



2015 Roosevelt Neighborhood Association Board Elections

We need YOU to take a leadership role in the RNA! Open positions include:

- *Chairperson for Sustainability**
- *Chairperson for Land Use**
- *IT/ Email support**
- *Social Media & Communications, Fundraising, Events, and Membership support**
- *Vice President (Resident)**
-and last, but not least, President!**

For more information please visit <http://www.rooseveltseattle.org>



HOST FAMILY OPPORTUNITY

Open your home to an EarthCorps international and make a lifelong global connection.

EarthCorps is seeking host families for our passionate, hardworking environmental change makers.

June-December 2015

www.earthcorps.org/homestays.php
homestay@earthcorps.org | 206.322.9296x224

NOW IN OUR NEIGHBORHOOD: RainWise & Earth Day Events

The **Roosevelt Sustainability Group** (RSG) supports the RainWise program - adding a rain garden, cistern or both to your property to help ease storm water/sewer overflows that can pollute Puget Sound. "Single-family properties make up 75% of Seattle's private land, so what we do at home really does make a difference." (RainWise brochure) RainWise information, stories and photos from RainWise neighbors, and more can be found at <http://www.rainwise.sustainableballard.org>. We recommend you visit the SPU website, <http://www.rainwise.seattle.gov>, email rainwise@seattle.gov or call 206-633-0224. You can qualify for rebates on these projects while helping the Sound. Several Roosevelt residents have attended recent "how to get started" programs.

Please attend one of these upcoming RainWise workshops:

April 19, 2015 6 - 7:30 p.m. at Ballard Public Library

April 22, 2015 7 - 8:30 p.m. at Phinney Neighborhood Association

Register for these sessions at <http://www.sustainableballard.org/register>

Coming Up! RSG will host the April RNA meeting Earth Day program. Speakers include staff from the City's Office of Sustainability and Environment to discuss the 2014 Seattle Environmental Progress Report and members of the Environmental Priorities Coalition to discuss state issues and legislation related to putting a price on carbon pollution, oil train safety and clean fuels. Hope you will join us! For more information about RSG please contact Ellen Stoecker at emstoecker@comcast.net.

Roosevelt Neighborhood Association (RNA) Purpose Statement :

The principal aims and objectives of the RNA-Seattle are to educate, engage, and empower those living in or in close proximity to the Roosevelt neighborhood of Seattle regarding issues of importance to the neighborhood described in the Roosevelt Neighborhood Plan that was adopted by the Seattle City Council.

What's the best thing I can do to get my home ready to sell?

People are always asking me, "what's the best thing I can do to get my home ready to sell?" The big question seems to be- should they remodel the kitchen or the bathroom prior to listing the house? I rarely recommend that anyone do a remodel in order to get ready to sell, there are simply too many personal touches involved in a remodel and you rarely get all of your money back. Check out the information below to see the average return on investment for common home improvements. My theory is, if you're going to remodel your home, do it early on and enjoy it for yourself, that's where you'll see the real value.

Home improvements that offer the most return on investment (ROI):

Entry door replacement (steel)	96.60% ROI
Minor kitchen remodel	82.70% ROI
Bathroom remodel	72.20% ROI
Window replacement	79.30% ROI
Basement remodel	77.60% ROI
New Roof	67.60% ROI

SOURCE: Remodeling Magazine 2014 Cost vs. Value Report, mid-range projects



You only get one chance to be "new on the market" so the home must be show-ready. That means everything from the front curb to the backyard must be in tip top shape, clean, and uncluttered. Start with landscaping, make sure everything is manicured and well maintained. Then move inside, the interior paint should be fresh and neutral and the windows should be cleaned. You want your house to be light and bright and CLEAN, I'm talking deep cleaning. An interested buyer will look in every corner of your house, so make sure everything looks neat and tidy. Overall the house should be uncluttered and depersonalized. A seller who takes these steps shows that they have cared for their home and a buyer is going to notice.



Jeff Sievers | John L. Scott | 206.391.1200 | Jeff@jeffsiewers.com | www.jeffsiewers.com

If you're interested in buying, selling, or investing in real estate I would be honored to work with you.

(RNAT) Committee Statement on Roosevelt Repaving and Protected Bike Lanes (PBL)

(continued from Page 6)

Safety - Bikes will be physically separated from traffic and will no longer be within the “door zone” of parked cars. Curb bulbs will help pedestrians crossing Roosevelt by shortening the crossing distance and increasing visibility to drivers. Buckled and cracked sidewalks will be replaced.

Transit - Buses will stop in the traffic lane to drop off/pick up passengers. This will slow traffic but improve speed and reliability for buses by reducing merging. Transit riders will wait on “transit islands”, allowing more space but potentially increasing the risk of pedestrian/bike collisions.

Parking - Parking will be removed along the west side of Roosevelt Way NE, with the exception of passenger load zones in front of UW Medical Center. SDOT is conducting parking studies for the neighborhood but there is no parking plan to date.

Connections - The Roosevelt PBL will improve connections between the upcoming Roosevelt and U-District light rail stations; PBLs on Ravenna Blvd and Campus Pkwy; the Burke Gilman Trail.

The RNA Transportation Committee feels that the location of the PBL on Roosevelt Way was a result of outreach and community engagement during the drafting and adoption of the Bicycle Master Plan and that the time has passed for lobbying for its relocation. However, the RNAT intends to work with SDOT on mitigation strategies for parking, loading zones, and other issues arising from this project.

For updates from the Seattle Department of Transportation visit :

http://www.seattle.gov/transportation/pave_roosevelt.htm

RNAT meets at 7 p.m. on the second Thursday of the month at rotating public venues. For more information email Peter James, rnapeter@gmail.com.

Excerpt from Ravenna Blog's Live Blogging of the Sisley Properties Press Conference



The city attorney's office held a press conference on Friday, March 13, on the northwest corner of NE 65th Street and 14th Avenue NE. The advance press release stated that this event was to provide details on how “the City is moving forward decisively in dealing with the \$3 million-plus legal judgment owed by the Sisleys.”

Excerpt from **Ravenna Blog's** notes:

- “\$3.4 million owed. \$800 added per day. Ordinance being introduced to take land behind him (3 parcels) and transfer it to the Parks Department.”
- “2 years ago, office started working on the Sisley problem. Full payments, no more piecemeal, partial business.”
- “City Attorney office worked with Parks, Mayor's Office, Council to find the funds to make this acquisition of land possible.”
- “Mayor Murray: Government worked collaboratively to make this happen. City tried to work with Sisleys for decades. They refused to act, so we are.”
- “The ordinance to acquire this land will be presented to the Council.”

To view the complete **ordinance** and entire live blog from the press event visit <http://www.ravennablog.com/press-conference-regarding-sisley-property-fines-live-coverage/>

Thanks to **Ravenna Blog** for representing our community at many events. Your coverage is essential for all of us to be more informed!



Quality dog walking in the Greenlake neighborhood.

One free dog walk...ask us for de-tails.

Bark@DiggityDogWalk.com

DIGGITYDOGWALK.COM

Roosevelt Neighborhood Association Transportation (RNAT) Committee

Statement on Roosevelt Repaving and Protected Bike Lanes (PBL)

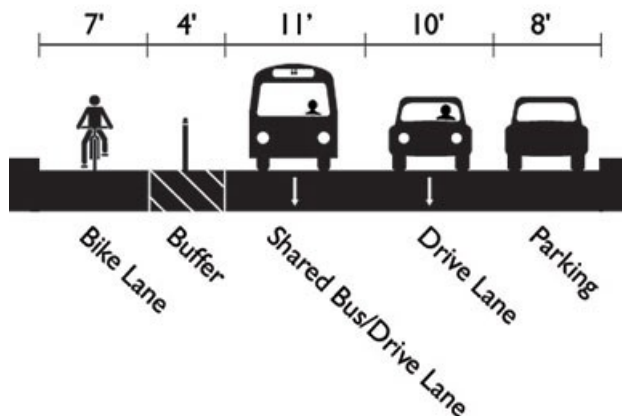
Beginning in fall 2015 Roosevelt Way NE from NE 65th St south to the University Bridge will be undergoing major changes. The Seattle Department of Transportation (SDOT) had queued up Roosevelt for resurfacing, but with light rail on the horizon and the Pedestrian and Bicycle Master Plans now in place, the decision was made to expand the project to include improvements for people in cars, buses, on sidewalks, and on bikes. The Roosevelt Repaving Project is slated to include repaving from NE 65th to the south end of the University Bridge, installing curb bulbs throughout the corridor, replacing substandard curb ramps, repairing sidewalks, consolidating bus stops, and installing a protected bike lane (PBL) from NE 65th St to the University Bridge. There is a possibility of installing energy-efficient LED street lighting.

While the changes to Roosevelt are comprehensive, the inclusion of the PBL and removal of parking on the west side of the road have drawn the most attention. The initial design of the Roosevelt repaving project included a PBL only from NE 45th St south to the U-Bridge. However, in response to concerns and engagement by the community group University Greenways SDOT worked to find funding and announced in January that the PBL would be extended to NE 65th St, along with the transit and sidewalk improvements. Although this corridor was identified in the Bike Master Plan (BMP) as having a PBL, community groups expressed concern that there was not enough public engagement before the extension was announced. Within the compressed timeline SDOT has held multiple drop-in sessions for the public, (November, January, February), canvassed businesses along the west side of Roosevelt Way, and met with neighborhood community groups, including the RNA General Meeting on February 24 and Roosevelt Business Group on March 4.

The RNAT finds a variety of pros and cons of the Roosevelt project, but supports the ultimate goal to improve the safety of the corridor for all users and upgrade infrastructure:

(Continued on page 7)

PROPOSED CROSS SECTION



ANNUAL RNA MEMBERSHIP FORM

\$_____ Student / Low Income \$20 = Individual \$35 = 2-Person Household \$95 = Business Member
(pay what you can) \$_____ Other Tax Deductible Donation

Name(s): _____

Address: _____

Phone Number: _____ Email Address: _____

Special Interest: _____

_____ Yes! I would love to be a Blockhead and help distribute *The Roosie*.

_____ Yes! I would love to place an ad to support *The Roosie*.

Please make check payable to: *The Roosevelt Neighborhood Association* & Mail to: 6910 Roosevelt Way NE, Box #518, 98115