

Roosevelt Neighborhood Association Newsletter

Katie Wood—Acting Editor

April 2016

<http://www.rooseveltseattle.org>

Is RPZ 19 working for you?

by Peter James, Chair of RNA Transportation Group

Restricted Parking Zones (RPZ) are set up around the city to protect residential parking from long-term parking by folks from elsewhere. Residents pay for a sticker that allows them unrestricted parking. To quote from Seattle Dept. of Transport (SDOT),

"[The purpose] is to help ease parking congestion in residential neighborhoods, while balancing the needs of all people to be able to use the public streets."

Currently, SDOT is reviewing the entire RPZ program to see if it is still working or needs changing. Becky Edmonds of the RPZ review program is coming to our April 26th RNA meeting to discuss this. So here are a few thoughts to think about beforehand.

RPZ 19 covers most of the area south of 66th and north of Ravenna Boulevard, but excludes most arterials. It also extends east to 16th. It protects parking Monday to Friday daytimes, but does not function evenings and weekends. Much of it was originally set up to stop UW commuters from clogging up these streets while they walked or bused to campus. Nowadays, many of those streets are doing fine and residents can park reasonably close to home on their block. However in a few "hot spots", residential parking is routinely used up by visitors to the neighborhood.

There are four issues that seem to compromise the working of RPZ 19. A large increase in new residents trying to use

the same amount of street parking, construction workers from the building sites parking in RPZ spots, people visiting local businesses using the "free" 2 hour parking, and the future light rail station will draw commuters to park near the station.

Many of the new apartments that are being built provide much less off-street parking than there are units (or none at all). Many of those new residents will have cars, even if they don't use them every day. If their street address is part of an RPZ they can apply for a sticker to park.

Workers at development sites will be a prominent part of our near future. Many people coming to work here, come by car and need to park, often park-hopping around the neighborhood to take advantage of 2 hour free parking.

continued on page 2...



Let's Make Roosevelt Shine!

Earth Day Neighborhood Cleanup Event

Saturday April 23rd

9 a.m. to noon

Outside Whole Foods Market

Please join the Roosevelt Sustainability Group, Whole Foods, and Align Wellness for a spring community cleanup event!

Check in at Whole Foods Market on NE 64th St at 9 a.m. to gather your supplies. Cleanup equipment, gloves, and garbage/recycle bags all provided by Seattle Public Utilities.

Please join us in making our community sparkle! Rain or Shine! Refreshments provided by Whole Foods.

If you have questions, contact Ellen Stoecker at sustainability@rooseveltseattle.org.



AlignWellness

RNA General Meeting: Tuesday, April 26, 2016

6:30 p.m. Social, 7:00 to 8:30 p.m. Presentation

Restricted Parking Zones (RPZ)

CCA, 68th & Roosevelt, Third Floor

Next LUA Meeting: High School Blocks

Check RooseveltSeattle.org

Is RPZ 19 working for you? *cont.*

...continued from page 1

Most of the new developments seem to include ground-floor business spaces. Many of our new businesses are gyms, bars or restaurants, all of which generate short-term parking, which can legally use the 2 hours free parking on the weekdays.

Once the light rail station opens (in 2021) many of the streets north of the RPZ will be prime spots for commuters driving to catch the train. By then many of the streets north of the station may want to join RPZ19 to prevent all-day commuter parking.

On April 26th two staffers (Becky Edwards & Jonathon Winters) from SDOT will come to our general monthly RNA meeting (details on front page) to discuss this issue and address specific questions such as;

1. How can streets that are filled with visitor parking be preserved for residents (as is the purpose of an RPZ)?

2. What access to RPZ parking do residents of new apartment blocks have, especially if they provide little or no parking on site?
3. How can streets join the RPZ to preserve residential parking once the station opens?
4. What are the requirements of developers when they are working in an RPZ?
5. Can the time limits on RPZs be changed to better deal with the actual conditions at weekends and evenings.
6. Can RPZs exclude any visitor parking, except by using a guest pass.

If this issue is something you are interested or concerned about, please come to the meeting and be part of the conversation. Let's deal with this problem before it gets out of hand. Already some RPZ blocks in our neighborhood do not work, leaving residents frustrated and angry. As our neighborhood grows and develops, let's make sure we keep hold of quality of life issues that so many of us enjoy about living here!

Roosevelt Repave Underway

Check out the City's website for daily updates posted at www.seattle.gov/transportation/pave_roosevelt.htm

Roosevelt Way NE Paving and Safety Improvements Project re-posted from March 29, 2016

Construction began on March 14 and work is underway in Zone A, between NE 65th St and NE Ravenna Blvd. We expect construction in Zone A will last approximately 8 weeks, while the whole project will take 6-8 [months] to complete. [Sign up for weekly email updates at <https://el2.envirolytical.com/registration/form/17887>]

Zone A construction during the week of March 28

This week, work continues with:

- Demolition and concrete pouring for sidewalk corners and curb ramps
- Continuing with preparation to install conduit for bus islands
- Making drainage connections that will leave steel plates on the road
- This work is weather dependent and may be rescheduled if necessary.



- 1 Existing curb bulbs on NE and SE corners. Bus island south of 65th.
- 2 Existing curb bulbs all four corners
- 3 Curb bulbs into 63rd on west side (NW and SW corners), plus ped islands on both NW and SW corners
- 4 Curb ramps on all corners, plus SW corner will be built out. Ped islands both north and south of intersection.
- 5 Curb bulbs on north side of intersection (effectively moving crosswalk further north) and ped islands on both north and south sides of intersection
- 6 Bus island north of intersection, plus new directional ramps on NW and SW corners
- 7 Pseudo curb bulb with paint and delineator posts on east side, with new curb ramp. Ped island north of intersection.

Parking modifications
Parking will be eliminated on the west side of the street between NE 65th and NE 45th streets with the installation of the new protected bike lane.

Progress from last week includes:

- Beginning work to install conduit for bus islands and making drainage connections
- Sidewalk repairs on the east side of Roosevelt Way NE between NE 64th and NE 63rd streets
- Demolition of northwest and southwest corners at NE 63rd St
- New sidewalk corners and curbs at the NW and SW corners at NE 62nd St

We will maintain access to shops and businesses at all times. ***Please continue to eat, shop, and play in the Roosevelt Business District throughout construction!***

Impacts

During construction, residents, businesses, and travelers can expect the following:

continued on page 3...



MAPLE LEAF
Veterinary
CARE CENTER

8626 Roosevelt Way NE, Seattle, WA 98115
Ph: 206.524.2020 * Fax: 206.985.4385
mapleleafvet@gmail.com
www.mapleleafvet.com

SHOP AND DINE ON ROOSEVELT



Roosevelt Paving and Safety Improvements Project

www.seattle.gov/transportation/pave_Roosevelt.htm



Roosevelt Business Group

Thank you to our local businesses that make up the Roosevelt Business Group (RBG). To join the RBG, contact vp-business@rooseveltseattle.org, fill out the membership form on the back cover, or go online rooseveltseattle.org/membership/donate/ The RBG meets the 1st wednesday of the month at rotating locations. Contact vp-business@rooseveltseattle.org for the location of the next meeting.

Member List

4toExplore	2111 NE Ravenna Blvd
8 Bells Winery	6213B Roosevelt Way NE
Body & Brain Ravenna Park	
Yoga and Tai Chi	5101 25th Ave NE, Ste 1
Calvary Christian Assembly	6801 Roosevelt Way NE
Health Mutt	1207 NE 65th St
Lake & Company Real Estate	7801 Green Lake Dr N
Lee Edwards Residential Design	1035 NE 71st St
LIV Roosevelt, LLC	3445 California Ave SW #A
Maple Leaf Veterinary	8626 Roosevelt Way NE
Olympic Pizza & Pasta	6415 Roosevelt Way NE
Rain City Burgers	6501 Roosevelt Way NE
Roosevelt Vision	7001 Roosevelt Way NE
Scott & Suzanne Jamieson	19030 11th Ave NW
Sound Transit	401 S. Jackson St
The Johnson Partnership	1212 NE 65th St
Umpqua Bank	6402 Roosevelt Way NE
Wolf Dreams	4544 7th Ave NE #410

...continued from page 2

- Weekday work hours, 7AM – 5 PM, Monday through Friday (occasional night/weekend work may be necessary and advanced notice will be provided)
- Lane restrictions; one lane maintained at all times and two lanes maintained during the morning and afternoon commute hours, 7-9 AM, 3-6 PM)
- On-street parking restrictions on Roosevelt Way NE during construction; west side parking will be permanently removed
- Closed sections of sidewalks and pedestrian detours with temporary access that meets Americans with Disability Act (ADA) requirements
- Bike lane closure in construction zone; people on bikes should follow signed detour or merge with traffic
- Temporary bus stop relocations or closures (for more information, visit metro.kingcounty.gov)
- Short term loss of access to driveways and side streets (we will notify affected properties in advance)
- Steel plates on the road and rough pavement after grinding
- Temporary delays and longer travel time through the work zones
- Construction noise, dust, and vibration

Wondering where to park during construction?

[Go to www.seattle.gov/transportation/docs/roosWhere_to_park_Zone_A.pdf for a color-coded parking map.]

Parking is still available on Roosevelt Way NE on most nights and weekends. Check the “No parking” signs for time limits and dates of restriction before deciding to park on or off of Roosevelt Way NE.

We conducted a survey on how to manage parking long-term and heard a variety of opinions. Read our brochure to see how we’ve incorporated feedback and worked to provide a range of parking options from 30-minute to 4-hour time limits along the east side of Roosevelt. Parking changes are being implemented between NE 65th and NE Ravenna Blvd and will continue being added during the first half of 2016.

Questions or concerns? Contact the project team at RooseveltCorridor@seattle.gov or 206-727-3575.

We are committed to keeping the community informed during construction and will update [the] webpage regularly. We will send weekly construction updates via email. The outreach team will work directly with residents and businesses on Roosevelt Way NE for access restrictions and specific impacts. Please don’t hesitate to get in touch with the project team with questions or concerns.

Roosevelt Developments

The Roosevelt Neighborhood is growing quickly. Below is a list of upcoming developments in the neighborhood sorted by total number of units (largest developments are at the top of the list). Number of affordable units, parking spaces, and estimated completion dates are listed where known.

The list was compiled from data gained from the RNA Land Use Committee as well as info from the Apartment Development Report from Dupre + Scott.

To find more info on development projects throughout the city, go to:

www.seattle.gov/dpd/shapingseattle/map.aspx

Or attend a Roosevelt Neighborhood Association Land Use Committee meeting.

Land Use committee meetings are the 2nd Tuesday of each month at 7pm – CCA 6801 Roosevelt Way NE, Rm 317.

Address	Property Name	Units	Affordable Units	Live/Work	Retail	Parking	Housing Type	Estimated Completion
800 NE 67th Street	Eleanor	260	52			220	Residential	2Q 2016
802 NE 66th Street	Iron Flats	235				105	Residential	4Q 2019
6501 15th Ave NE	BLOCK TWO	220			X	267	Residential	
6516 12th Avenue NE	Roosevelt II	220			X	150	Dwelling Units	4Q 2017
6105 Roosevelt Way NE		128			X	0	Congregate Residence	
816 NE 66th St		96				49		
802 NE 66th St		84				51	Apartments	
6404 9th Avenue NE	LIV Roosevelt	83			X	5	Apartments	1Q 2018
6800 Roosevelt way NE	Medora	79			X	64	Residential	1Q 2017
834-836 NE 67th St	Roosevelt II	76	16			0	Residential	
836 NE 66th Street		75						4Q 2016
6921 Roosevelt Way NE		75		4			Residential + Live/work	3Q 2017
1222 NE 65th Street		55			X	0	Small Efficiency Dwelling Units	4Q 2017
7011 Roosevelt Way NE		48		2		0	Residential + Live/work	4Q 2017
1319 NE 65th Street	Ecoluxe 1	41	9		X	8	Residential	4Q 2017
831 NE 66th Street	Formosa Roosevelt	40			X		Small Efficiency Dwelling Units	1Q 2019
838 NE 69th St		30					Residential	
7012 Roosevelt Way NE		29				0	Small-Efficiency Units	
6616 8th Avenue NE		20				0	Residential	3Q 2017

U District Renters' Council Meeting

University Branch Library

Apr 16 @ 11:00 am – 12:30 pm

How does Rental Registration and Inspection Ordinance (RRIO) help renters? RRIO helps ensure all rental properties in Seattle meet important housing safety and maintenance requirements. Watch the Seattle Department of Construction and Inspections (formerly DPD) RRIO Video for more info:

<https://www.youtube.com/channel/UCeQIFetOMTPc0bbnPUTfhTw>

Guest Speakers

City of Seattle and Tenants Union of Washington State

Raffle Prizes: Get an extra ticket if you RSVP to udistrictrenterscouncil@groups.facebook.com

- Coloring Table for Kids
- Snacks & Refreshments
- Free event for everyone!
- All are welcome

This event is not sponsored by the Seattle Public Library.



**Camelia Ades, ARNP,
MSN, MPH**

**National board-certified Family Practitioner
offering a holistic, integrative approach
to your healthcare needs**

Prevention & Wellness Physicals
Women's Health Issues
Natural Hormone Replacement
Personalized Nutrition Plans
Weight Management
Metabolic Disorders
Vitamin B12 Shots
Skin-related Problems
Non-invasive Laser Treatments

Located inside the Seattle Healing Arts Center in the Roosevelt District:
6300 9th Ave NE, Suite 200 • Seattle, WA 98115 • phone 206-522-5646
www.HolisticHealthSeattle.com

WELCOME TO THE RNA

**20 RESIDENTIAL AND BUSINESS MEMBERS
HAVE JOINED OR RENEWED THEIR
MEMBERSHIP WITH THE RNA SINCE THE
START OF THE YEAR.**

Weedin Place - It's a Go!!!

Your help is needed to paint the street

by Katie Wood

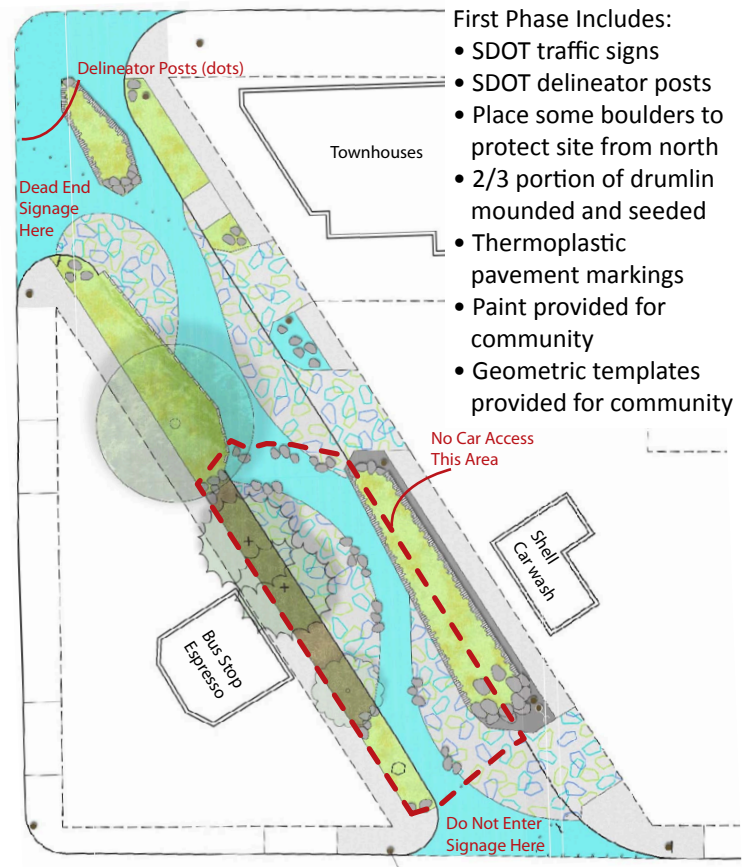
The Weedin Place Gateway project, located at NE 65th St and 8th Ave NE (between the Bus Stop Espresso and the Shell gas station), is on track for Phase 1 implementation this summer.

The Weedin Place Steering Committee, working with SDOT, the Office of Economic Development (OED), SvR Landscape Architects, artist Chris Burnside, with input from our Roosevelt neighbors have completed the landscape designs for Weedin Place.

Phase 1 will be implemented this summer and we need your help! A tentative date of Saturday, July 23rd has been set for a work party to paint the street. We are planning a modified Bull Moose Festival around this event and look forward to all of our neighbors coming out to paint the street and celebrate with their neighbors.

Please email weedinplace@rooseveltseattle.org to sign up to change this space into a useable public area.

Phase 2 and beyond, including the public art, will be implemented when funding becomes available.

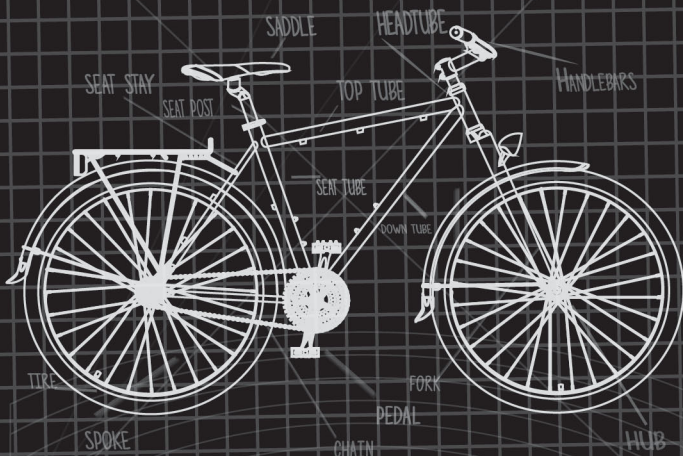


First Phase Includes:

- SDOT traffic signs
- SDOT delineator posts
- Place some boulders to protect site from north
- 2/3 portion of drumlin mounded and seeded
- Thermoplastic pavement markings
- Paint provided for community
- Geometric templates provided for community

Email weedinplace@rooseveltseattle.org to receive updates or sign up for the paint party!

PSALMS: BLUEPRINT FOR PRAYER



CCA SERMON SERIES
April/May 2016
Sundays @ 9:30 & 11 AM

RNA Elections in May

The RNA annual elections are held in May. The neighborhood association would like to invite anyone interested in the future of the neighborhood to join the RNA and volunteer to become a Director or Committee Chair. The RNA encourages representation as diverse as our neighborhood. Apartment dwellers, renters, home owners, business owners, non-profits, and employees working in the neighborhood are all welcome! The available volunteer positions, requiring about 10 hours/month, are:

- **Treasurer**
- **Events/Culture Comm.**
- **Communications Comm.**
- **Membership Comm.**
- **Sustainability Comm.**

Contact rna@rooseveltseattle.org for more info

Thinking of selling in 2016?

Free Staging, Free Landscaping, Free House Cleaning, Free Photography



Ellen Hastings & Dida Lopez
206-650-6486
ellen@theloonteam.com
theloonteam.com



We're here for you rain or shine!



Free market analysis in Jan. & Feb.
includes a complimentary Loon Umbrella.

Give us a call.
The Loon Team has you covered!

Temporary Art on Sound Transit Construction Wall

Temporary art has been installed on the green wall surrounding the Light Rail construction site. The art, which is on NE 65th St was created by Kelda Martensen <<http://keldamartensen.com/artwork/3971358-Roosevelt-Mural-Installation-Project-2016.html>>.

The art was commissioned through Sound Transit's SStart

program which aims to enliven construction sites with temporary public art.

This art will be up until the Roosevelt Station is complete, estimated to be 2021.

More art will be coming soon on the wall along 12th Ave NE., just around the corner from this new art.



Art installation crew mounts art on 65th St. wall on March 25th. Photo courtesy of Ryan Bianchi, Sound Transit.



Link Light Rail Drop-In Meeting

Join us! Come learn about the Northgate Link Extension, a future 4.3-mile light rail extension that includes stations at Northgate, Roosevelt and University District. Project staff will be available to answer your questions about design and construction progress. There will be no formal presentation.

When: Saturday, April 30, 2016
9 a.m. - 2 p.m.

Where: U District Farmers Market
University Way (the "Ave")
between NE 50th and NE 52nd streets



Look for project staff
in construction vests.

SOUNDTRANSIT

For more information

Contact Rhonda Dixon at 206-398-5300 or northlink@soundtransit.org, or visit soundtransit.org/northgatelink. To request accommodations for persons with disabilities, email accessibility@soundtransit.org or call 1-800-823-9230 / TTY Relay: 711.



To receive project update emails, subscribe online at soundtransit.org/subscribe.

RainWise Workshops

by Ellen Stoecker

Learn about how rain gardens and cisterns help manage storm water, hear from delighted RainWise homeowners and get inspired by pictures of their yards, meet trained RainWise contractors who can offer a free consultation, learn about big rebates from SPU and King County (up to 100% of the total cost), and get set to take the next step. All homes in Roosevelt and most in Ravenna qualify for rebates under this program.

RainWise
www.rainwise.seattle.gov

North Seattle RainWise Workshops

Apr 7, 7-8:30 pm

Phinney Neighborhood Center, 6532 Phinney Ave N

Apr 18, 6-7:30 pm

NE Seattle Library, 6801 35th Ave NE

May 11, 6-7:30 pm

NE Seattle Library, 6801 35th Ave NE

Register at www.sustainableballard.org/register-for-events

Subscribe today to "4 TO EXPLORE," a free neighborhood newsletter from your neighbor, Alex Pedersen, Former Seattle City Council Legislative Analyst. www.4toExplore.org



4 TO EXPLORE: YOUR NORTHEAST NEIGHBORHOOD NEWSLETTER

Seattle is truly a city of neighborhoods. Our neighborhoods in northeast Seattle - from Wallingford to Roosevelt to Windermere - are like treasures to discover each season when we just explore outside our front door.

This is "4 to Explore," a treasure map to 4 of the best things each season:

- 1 shop or restaurant to visit,
- 1 meeting to connect with neighbors,
- 1 fun activity to enjoy, and
- 1 neighborhood issue to engage.

Visit our new website www.4toExplore.org and enjoy exploring!



Alex Pedersen, Former City Council Legislative Analyst, and his family in Ravenna Park

www.4toExplore.org

OPPORTUNITIES

Roosie Editor—neighborhood volunteer needed for 15 hrs/month. Duties include request for content and ads, layout, proofreading, output for press. 9 editions/yr. Computer required. Will train. rna@rooseveltseattle.org

RNA Board Members—volunteers interested in the neighborhood association are urged to contact Ellen at rna@rooseveltseattle.org

Attention High School Students—new opportunity for service learning hours. Are you interested in your local neighborhood development, business, economics, or research? The Roosevelt Business Group needs your help documenting and mapping the businesses and vacancies in the neighborhood. If interested, please contact vp-business@rooseveltseattle.org

Weedin Place Street

Painting—sign up as a volunteer with the community project to paint Weedin Place and participate in the community celebration. Email weedinplace@rooseveltseattle.org

RNA Treasurer—RNA seeking board treasurer beginning in June. Volunteer position - 10 hrs/month. Small organization with light duties.

Roosie Distribution—volunteer needed to deliver newsletters to neighbors. Various routes available to fit your level of time commitment. Contact Gina at blockhead@rooseveltseattle.org

RNA Events & Culture Committee Chair—neighborhood volunteer opportunity to lead the small events and culture committee. Time commitment depends on events - may average 10+ hrs/week.

Kavela

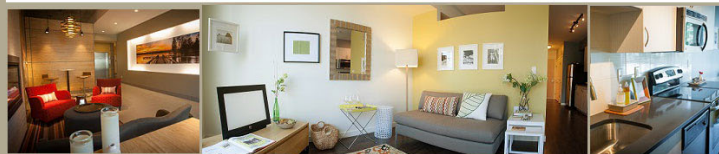
Explore. Relax. Repeat.

Pantry
Shefayoga
Dishwasher
Bicycle Storage
Walk Score of 95
Broadcast Coffee
Washer and Dryer
Granite Countertops
Stainless Appliances
Rooftop Deck with BBQ
Professionally Managed
Oversized Laundry Room

Newly Finished Studio,
One and Two
Bedroom Homes



shefayoga



(206) 522-4600
www.KavelaApartments.com

ADVERTISE IN THE ROOSIE: <http://rooseveltseattle.org/theroosie/advertise/>

Get Involved!

Please contact the RNA to share your skills and learn more about your neighborhood.

<u>Name</u>	<u>Officer/Director</u>	<u>Email</u>
Jack Mowreader	President	president@rooseveltseattle.org
Stephen Fanelli	Vice President Business	vp-business@rooseveltseattle.org
	Business Membership	membership@rooseveltseattle.org
Scott Montagne	Vice President Residential	vp-residential@rooseveltseattle.org
	Residential Membership	membership@rooseveltseattle.org
Mark Konings	Treasurer	treasurer@rooseveltseattle.org
Ellen Stoecker	Secretary	secretary@rooseveltseattle.org
	Sustainability / Emergency Prep Group	sustainability@rooseveltseattle.org
Katie Wood	Fundraising & Grants Chair	fundraising@rooseveltseattle.org

<u>Name</u>	<u>Committee Chairs</u>	<u>Email</u>
Peter James	Transportation (RNAT)	transportation@rooseveltseattle.org
Gina Leone	Head Blockhead for The Roosie	blockhead@rooseveltseattle.org
Jay Lazerwitz	Land Use	landuse@rooseveltseattle.org
Jim O'Halloran	Land Use Special Projects	lua@rooseveltseattle.org
Katie Wood	Acting Editor, <i>The Roosie</i>	communications@rooseveltseattle.org
Stephen Fanelli	Roosevelt Business Group President	business@rooseveltseattle.org

Scott Cooper represents the RNA on the UW City/University Community Advisory Committee (CUCAC).

Katie Wood represent the RNA at Northeast District Council meetings (NEDC).

Please follow the RNA on Twitter: [@roosieseattle](https://twitter.com/roosieseattle)

Subscribe to the RNA website blog at RooseveltSeattle.org

Join the conversation with your neighbors at Facebook.com/groups/RooseveltSeattle/

**We need your help today. Please volunteer to edit, deliver or contribute articles to *The Roosie*.
If interested, please contact: Communications@RooseveltSeattle.Org**

ANNUAL RNA MEMBERSHIP FORM

\$_____ Student / Low Income \$20 = Individual \$35 = 2-Person Household \$95 = Business Member
(pay what you can) \$_____ Other Tax Deductible Donation

Name(s): _____

Address: _____

Phone Number: _____ Email Address: _____

Volunteer Skill(s) / Area(s) of Community Interest: _____

- ☐ I would love to pay annual membership dues to support increasing RNA's outreach and community events.
- ☐ I enjoy receiving *The Roosie* at my door and will donate my time to deliver to others by being a "Blockhead".
- ☐ Please enter my email address to the <http://www.RooseveltSeattle.org> blog email list.
- ☐ Yes! I would love to place an ad to support *The Roosie* (Discounts for members!)
- ☐ Please welcome me, by name, as a new or renewing member on the website/twitter/facebook/next issue of *The Roosie*.

Please make check payable to: The Roosevelt Neighborhood Association & Mail to: 6910 Roosevelt Way NE, Box #518, 98115

OR *New* Pay your membership dues online at RooseveltSeattle.org/Membership/