

The Roosie

Roosevelt Neighborhood Association Newsletter

Sagar Ramachandra—Editor

January/February 2017

<http://rooseveltseattle.org>

Roosevelt Station Construction to Begin in Early 2017

By Andrea Burnett, Sound Transit

In November of 2016, the Sound Transit Board of Directors authorized award of a contract to Hoffman Construction Company to build the Roosevelt Station, which will serve Northgate Link Extension trains when light rail service begins in 2021.

The \$152 million contract includes constructing civil, structural and architectural finishes for the underground station in the Roosevelt neighborhood, with entrances along 12th Avenue NE at NE 65th Street and at NE 67th Street. It includes elevators, escalators and stairs, mechanical and electrical equipment, fire protection and emergency ventilation systems, public art, and surface features and landscaping.

Most of the Northgate Link Extension is underground in twin tunnels to and from the University of Washington Station at Husky Stadium with stops at stations in the Roosevelt and U District neighborhoods. The extension then moves to the surface on the west side of First Avenue NE and NE 94th Street and transition to an elevated guideway to a station adjacent to the Northgate Mall.

Hoffman Construction will gain site access to the Roosevelt Station in February and will begin building the station walls.

The \$1.9 billion Northgate Link project extends light rail 4.3 miles north from the University of Washington. Riders using Roosevelt Station will enjoy two-minute rides to the U-District, four-minute rides to Husky Stadium, 10-minute rides to downtown and 44-minute rides to Sea-Tac Airport.

More information on the Northgate Link Extension can be found at soundtransit.org/northgatelink.



How would you spend \$90,000 in your neighborhood?

By: Katie Wood

The Neighborhood Park and Street Fund provides funds annually to neighborhoods for small-scale improvements to streets and parks. In 2017, this program will be folded into the City's Participatory Budgeting process, in which Seattle residents will democratically decide how to spend the funds.

In 2017, \$2,000,000 will be available split equally between the 7 council districts.

Continued on page 3...



8626 Roosevelt Way NE, Seattle, WA 98115
Ph: 206.525.2020 * Fax: 206.985.4385
mapleleafvet@gmail.com
www.mapleleafvet.com

Thinking of Selling?

Free Staging, Free Landscaping, Free House Cleaning, Free Photography



Ellen Hastings & Dida Lopez
206-650-6486
ellen@theloonteam.com
theloonteam.com



Let's talk timing.

Land Use Updates

By Jay Lazerwitz

Roosevelt TOD meetings:

As Roosevelt Station takes shape the construction area near the station will become available for Transit Oriented Development (TOD). TOD usually involves a mix of new housing and commercial uses that creates additional ridership at the transit facility. Combining housing and commercial activity near the light rail station will make it easier for people to use transit, support local businesses and contribute to neighborhood growth.

Sound Transit and the Roosevelt Neighborhood Association invite you to learn and comment about the future development at the Roosevelt light rail station construction site. Three Workshops are scheduled to delve into program issues (affordable housing, community benefit, and design guidelines).

- Roosevelt TOD Workshops: Calvary Christian Church, 6801 Roosevelt Way NE, Seattle, WA 98115
 - January 25, 2017 (5:30 p.m. – 8:00 p.m.)
 - February 8, 2017 (5:30 p.m. – 8:30 p.m.)
 - February 22, 2017 (5:30 p.m. – 8:30 p.m.)
- Roosevelt TOD Open House: March 9, 2017 (6:00 p.m. – 8:00 p.m.) Roosevelt High School Commons, 1410 NE 66th St., Seattle

Seattle HALA proposal for Urban Village boundary & zoning changes

Over 70 community members attended the Dec. 10th RNA sponsored HALA workshop. The group split into table-sized groups to discuss the Zoning and Urban Village boundary changes proposed by the City of Seattle.

An RNA report will be submitted to the City of Seattle based on the various comments and responses.

Overall most people supported the zoning changes delineated on the current draft plan and a range of informative comments were presented by community members. The community is split on the Urban Village expansion; many of these ideas will also be included in the report.

Additional links:

HALA, Housing Affordability Livability Agenda: <https://hala.consider.it/>

Roosevelt Draft Plan: <https://goo.gl/8JEiuP>

Guide to Housing Options: <https://goo.gl/CdywBr>

Land Use committee meetings are on 2nd Tuesdays 7pm at the CCA 6801 Roosevelt Way NE.

Subscribe today to "4 TO EXPLORE," a free neighborhood newsletter from your neighbor, Alex Pedersen, Former Seattle City Council Legislative Analyst. www.4toExplore.org



4 TO EXPLORE: YOUR NORTHEAST NEIGHBORHOOD NEWSLETTER

Seattle is truly a city of neighborhoods. Our neighborhoods in northeast Seattle - from Wallingford to Roosevelt to Windermere - are like treasures to discover each season when we just explore outside our front door.

This is "4 to Explore," a treasure map to 4 of the best things each season:

- 1 shop or restaurant to visit,
- 1 meeting to connect with neighbors,
- 1 fun activity to enjoy, and
- 1 neighborhood issue to engage.

Visit our new website www.4toExplore.org and enjoy exploring!



Alex Pedersen, Former City Council Legislative Analyst, and his family in Ravenna Park

www.4toExplore.org

Got questions about life

Alpha

ALPHA is an 11-week series of sessions for exploring life and the Christian faith in a friendly, informal environment. Each week, we look at a different question on the big issues around faith and unpack the basics of Christianity. Everyone is welcome, especially those who are just beginning their faith journey or have questions about Jesus and what it means to follow him.

START DATE • Wednesday, February 1
MEETING TIMES • 7 pm
LOCATION • Calvary Christian Assembly
FACILITATOR • Pastor Steve Pecota

For more info, visit ccassembly.org

CALVARY CHRISTIAN ASSEMBLY | 6801 ROOSEVELT WAY NE

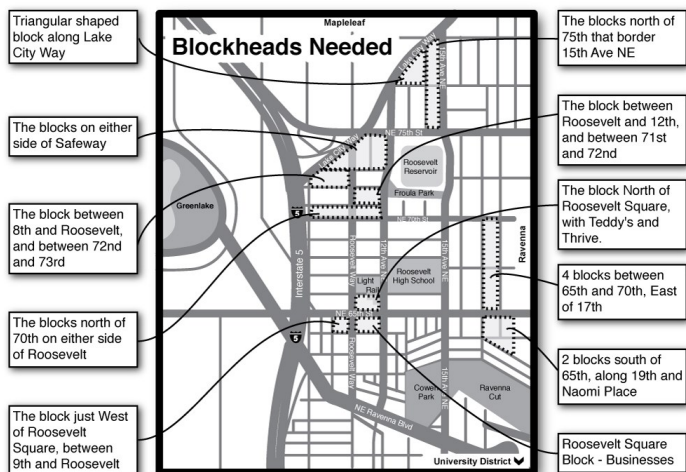
Blockheads Needed!

By Gina Leone

Hello neighbors! The Roosie is distributed door to door in our neighborhood by a wonderful network of volunteers called Blockheads. They live in the neighborhood and you probably even know one or two of them. Without their help, you may not get the Roosie each month. And the RNA is forever grateful to them all.

But with our ever-changing neighborhood, we are delivering more and more newsletters and sadly, some of our Blockheads have moved away. We currently have about 14 blocks that do not have designated Blockheads. If you have NOT received a Roosie on your porch every month, you may live on one of these blocks.

If you have a little extra time each month, please consider becoming a Blockhead. One block typically takes less than a half hour to distribute to, and it's a great way to get exercise and meet your neighbors. If you are interested, please email blockhead@rooseveltseattle.org for more



How would you spend \$90,000 in your neighborhood?
...Continued from page 1

District 4 will have just over \$285,000 for neighbors to allocate to projects within their district. The district roughly stretches south from NE 85th St down to the Ship Canal and from I-5 east to Lake Washington. Wallingford and part of East Lake Union are also included.

Projects must be one-time capital expenditures. In the past, projects have consisted of traffic circles, protected bike lanes, crosswalks, street trees, park updates, curb bulbs, school crossing enhancements, public space amenities, as well as landscaping and beautification projects. The Department of Neighborhoods (DON) is working on an online system to accept ideas. All submittals are due during the month of February. More information will be available on the DON website soon. <https://goo.gl/HF5q6o>

If you have an idea that you would like to get in, please e-mail fundraising@rooseveltseattle.org with your project idea, location, need, and who it will benefit.

Roosevelt-University-Greenlake Little League



2017 Registration is open!!

206-367-1629

Go to RUG's website: www.rugll.org

KNOW THYSELF
EAST WEST
BOOKSHOP

6407 12th Ave NE Seattle
WA 98115. 206-523-3726

Inspiring Books
Uplifting Events
Delightful Gifts

Upstairs At Roosevelt Square



Kavela

Explore. Relax. Repeat.

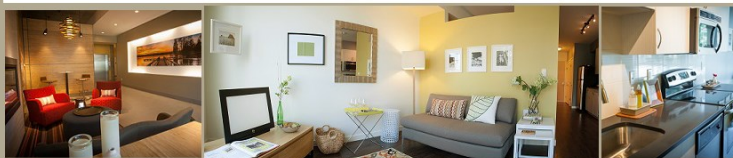
Pantry
Shefayoga
Dishwasher
Bicycle Storage
Walk Score of 95
Broadcast Coffee
Washer and Dryer
Granite Countertops
Stainless Appliances
Rooftop Deck with BBQ
Professionally Managed
Oversized Laundry Room

Newly Finished Studio,
One and Two
Bedroom Homes



shefayoga

ROOSEVELT



(206) 522-4600
www.KavelaApartments.com

Get Involved!

Please contact the RNA to share your skills and learn more about your neighborhood.

<u>Name</u>	<u>Officer/Director</u>	<u>Email</u>
Scott Cooper	President	president@rooseveltseattle.org
Mark Konings	Treasurer	treasurer@rooseveltseattle.org
Ellen Stoecker	Secretary	secretary@rooseveltseattle.org
Adrienne Slaughter	Sustainability / Emergency Prep	sustainability@rooseveltseattle.org
Katie Wood	Fundraising & Grants Chair	fundraising@rooseveltseattle.org
Tom Wilson	Officer	director@rooseveltseattle.org

<u>Name</u>	<u>Committee Chairs</u>	<u>Email</u>
Adrienne Slaughter	Sustainability / Emergency Prep	sustainability@rooseveltseattle.org
Gina Leone	Head Blockhead for <i>The Roosie</i>	blockhead@rooseveltseattle.org
Jay Lazerwitz	Land Use	landuse@rooseveltseattle.org
Jim O'Halloran	Land Use Special Projects	lua@rooseveltseattle.org
Sagar Ramachandra	Editor, <i>The Roosie</i>	roosieeditor@rooseveltseattle.org

Consider joining the RNA! Contact rna@rooseveltseattle.org

Scott Cooper represents the RNA on the UW City/University Community Advisory Committee (CUCAC).
Katie Wood represents the RNA at Northeast District Council meetings (NEDC).

Please follow the RNA on Twitter: [@roosieseattle](https://twitter.com/roosieseattle)
Subscribe to the RNA website blog at: RooseveltSeattle.org
Join the conversation with your neighbors at: Facebook.com/groups/RooseveltSeattle/

We need your help today. Please volunteer to deliver or contribute articles to *The Roosie*.

If interested, please contact: RoosieEditor@RooseveltSeattle.Org

ANNUAL RNA MEMBERSHIP FORM

\$_____ Student / Low Income \$20 = Individual \$35 = 2-Person Household \$95 = Business Member
(pay what you can) \$_____ Other Tax Deductible Donation

Name(s): _____

Address: _____

Phone Number: _____ Email Address: _____

Volunteer Skill(s) / Area(s) of Community Interest: _____

- ☐ I would love to pay annual membership dues to support increasing RNA's outreach and community events.
- ☐ I enjoy receiving *The Roosie* at my door and will donate my time to deliver to others by being a "Blockhead".
- ☐ Please enter my email address to the <http://www.RooseveltSeattle.org> blog email list.
- ☐ Yes! I would love to place an ad to support *The Roosie* (Discounts for members!).
- ☐ Please welcome me, by name, as a new or renewing member on the website/twitter/facebook/next issue of *The Roosie*.

Please make check payable to: The Roosevelt Neighborhood Association: 6910 Roosevelt Way NE, #518, Seattle, WA 98115

OR *New* Pay your membership dues online at RooseveltSeattle.org/Membership/