



SDOT Projects in and near Roosevelt

Supporting Light Rail Expansion

Our vision, mission, and core values

Vision: Seattle is a thriving equitable community powered by dependable transportation

Mission: to deliver a transportation system that provides safe and affordable access to places and opportunities

Committed to **6 core values:**

- Equity
- Safety
- Mobility
- Sustainability
- Livability
- Excellence

Presentation overview

- Roosevelt Station Bus Stop Improvements (on Roosevelt Way NE and 12th Ave NE)
- Parking changes
 - Background
 - Project area and proposed changes
 - Curbspace management tools
 - Next steps
- Construction projects

Transit Coordination in the Roosevelt Area

- Ongoing effort between ST, KCM, and SDOT to coordinate all facets of transit operations prior to the opening of the new Northgate Link Extension.
- Project Update:
 - New bus stops to be implemented adjacent to the Roosevelt Station.



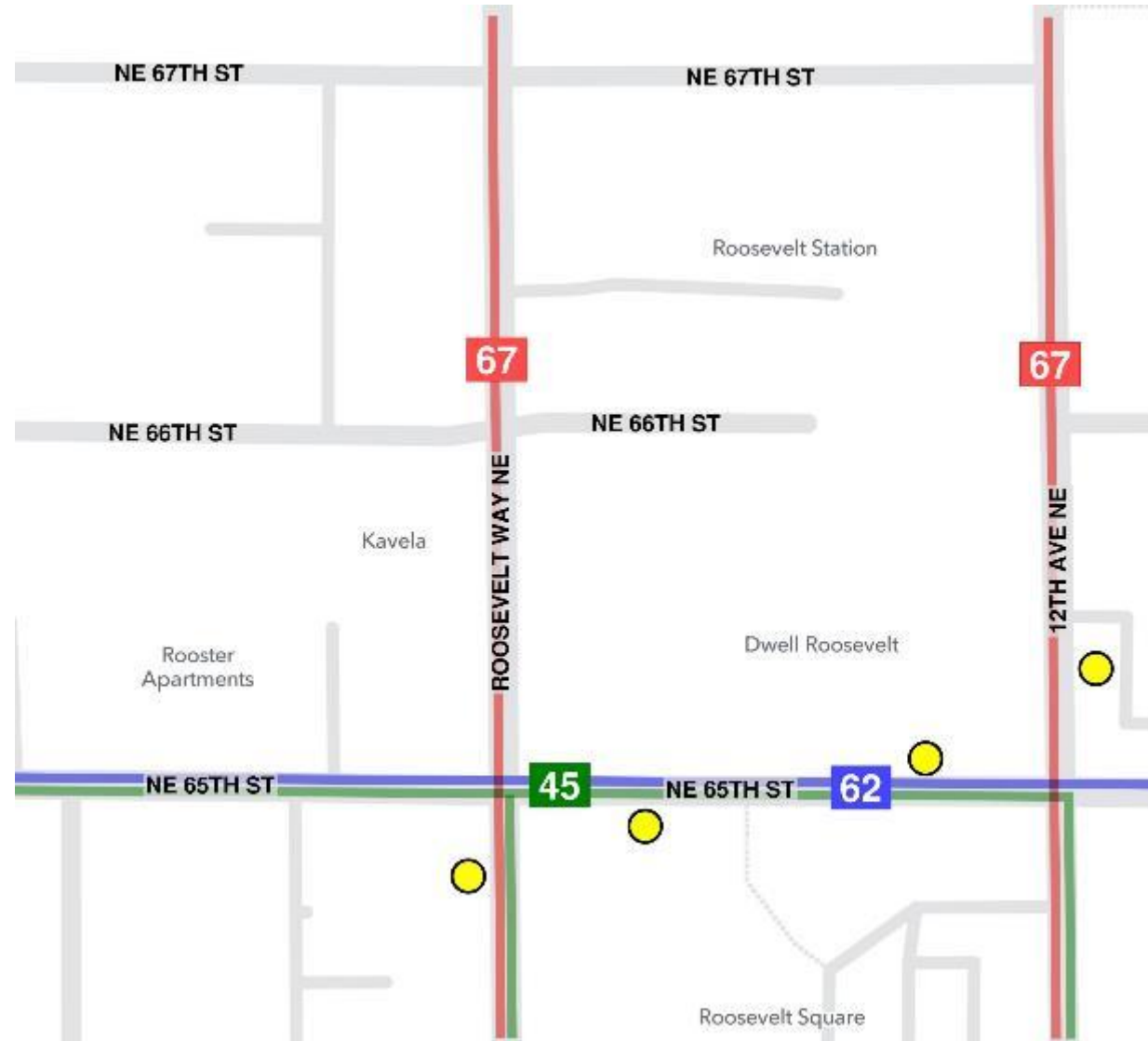
Background

- Roosevelt Station Planning (2014-2015)
 - ST and KCM sought community input for the new link station.
 - ST, KCM, and SDOT planned adjacent bus stops on NE 65th St.



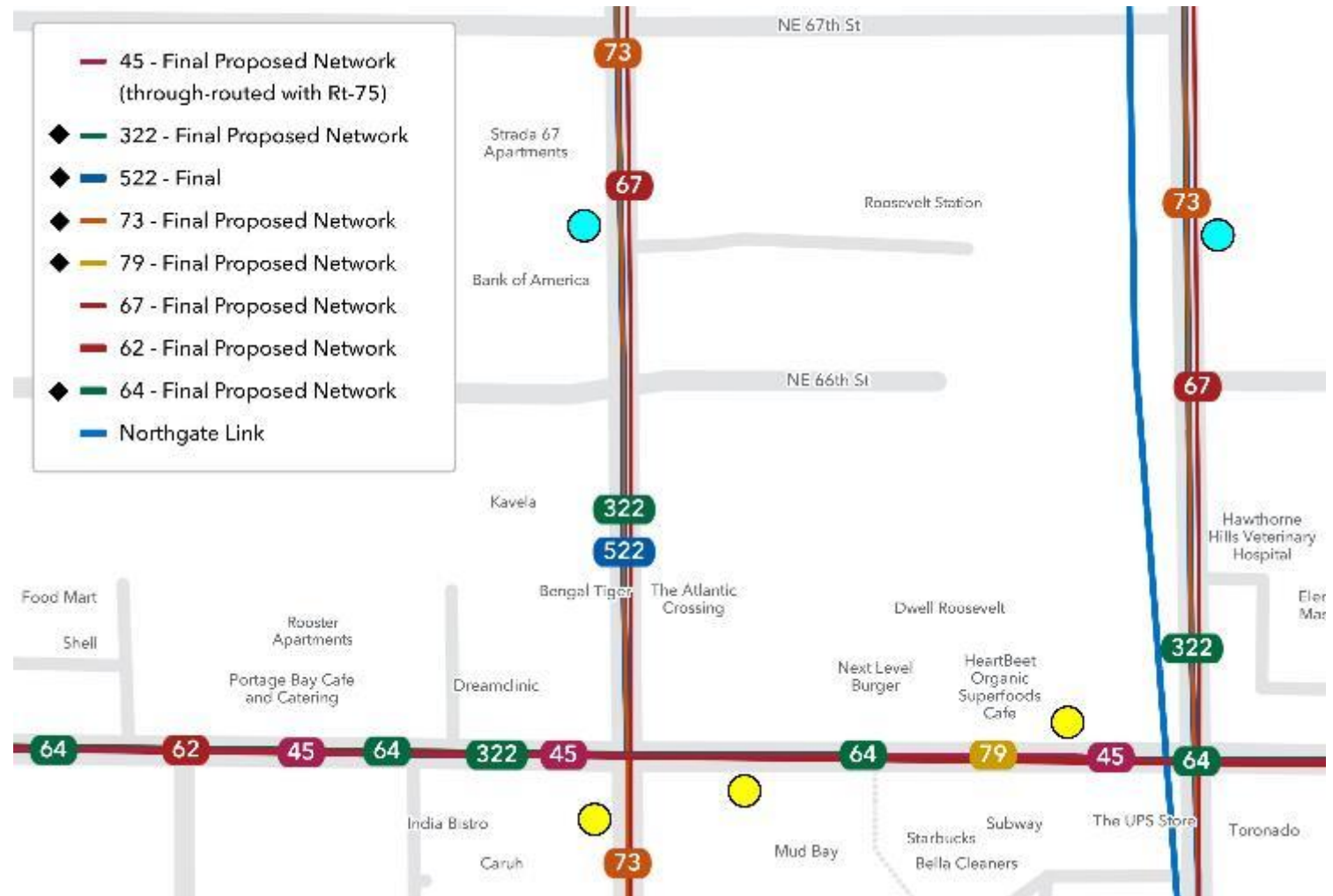
Background

- Bus stops and routes to support the Roosevelt Station as part of the 2014-2015 planning phase.



Bus Stop and Route Changes

- Bus Route Restructure (2019-2021)
 - Route 522 to terminate at the Roosevelt Station
 - New Routes 79 and 322
 - Modified Routes 45 and 73



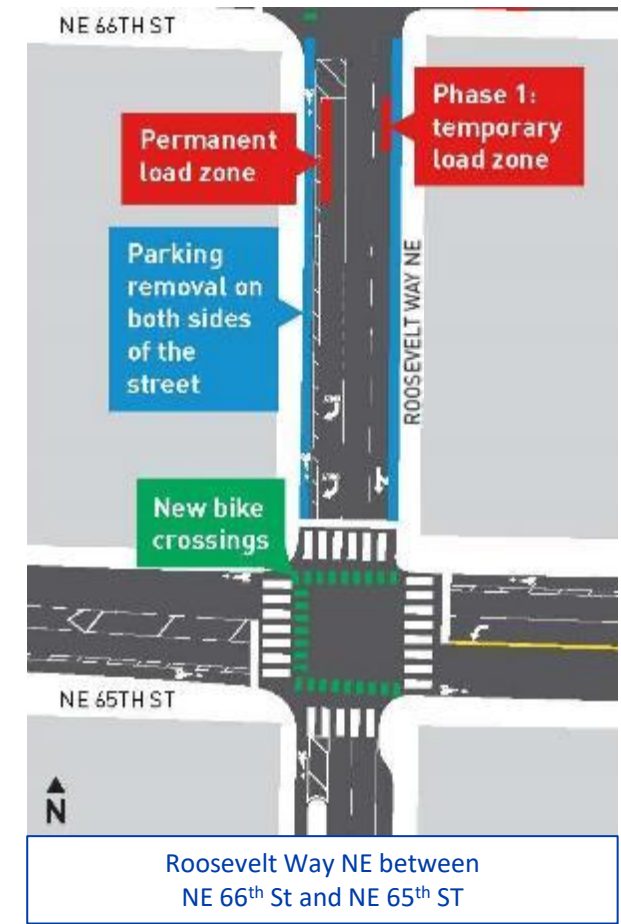
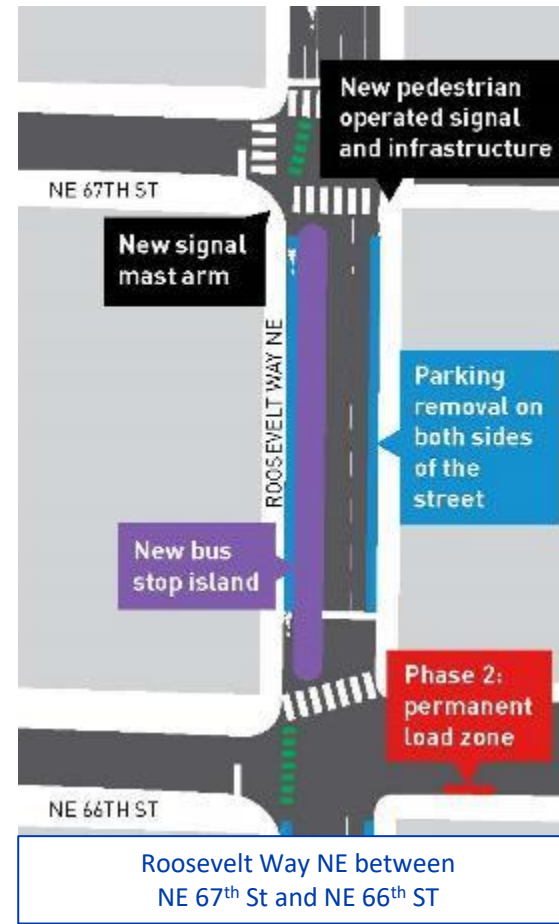
New Bus Stops

- New Bus Stops (2020-Present)
 - Due to increased pedestrian, rider, and bus volumes
- Project Goals:
 - To provide adequate infrastructure for the anticipated bus and pedestrian volumes
 - To facilitate access and mobility for all users
- The bus stops are intended to be operational by September 2021, in coordination with the Metro service change and prior to the Roosevelt Station opening.

New Bus Stops Scope

New Southbound Stop: Roosevelt Way NE/NE 67th St

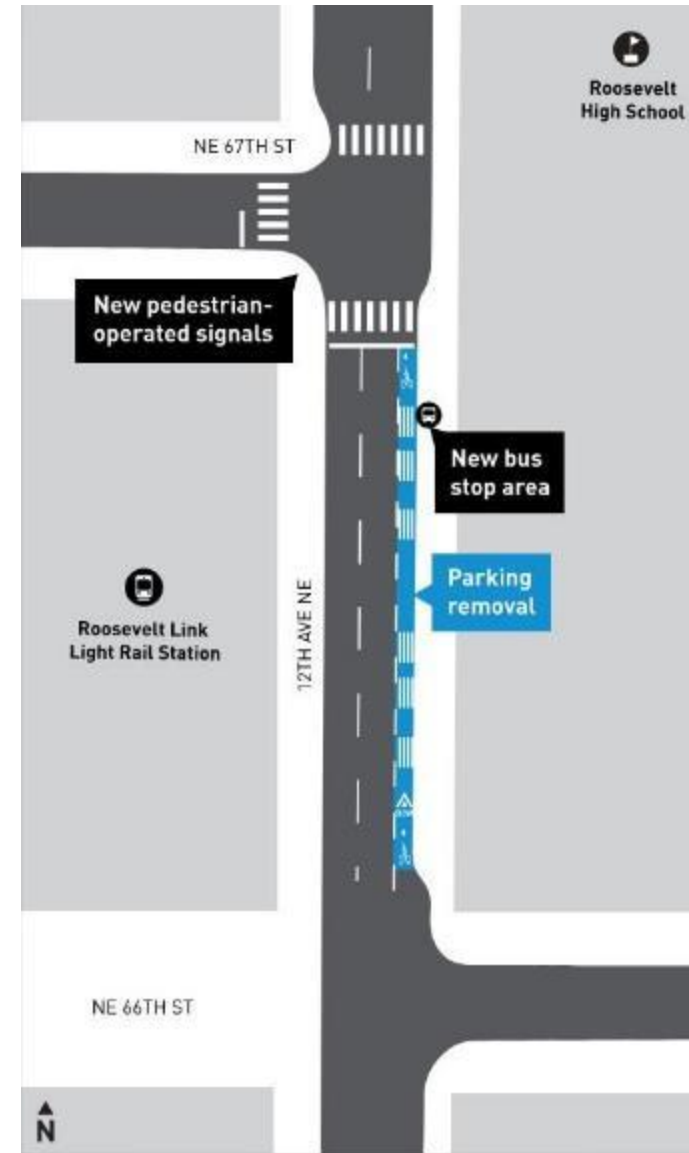
- New bus island and bus stop amenities
- Revised roadway configuration to support all users
- Pedestrian crossing improvements
- New protected bike lanes
- Load zones retained



New Bus Stops Scope

New Northbound Stop: 12th Ave NE/ NE 67th St

- New bus bulb and bus stop amenities
- Pedestrian crossing improvements
- Raised bike lane



Parking Management Background

- Goal – mitigate potential “hide and ride” parking in the neighborhood
- Sound Transit and SDOT are working together to accomplish this
 - Collecting parking occupancy data
 - Gathering feedback from stakeholders

Project

- Studying on-street parking within approximately a half-mile of the station
- Focus on restricting parking within a quarter-mile of the station, blocks that are currently unrestricted

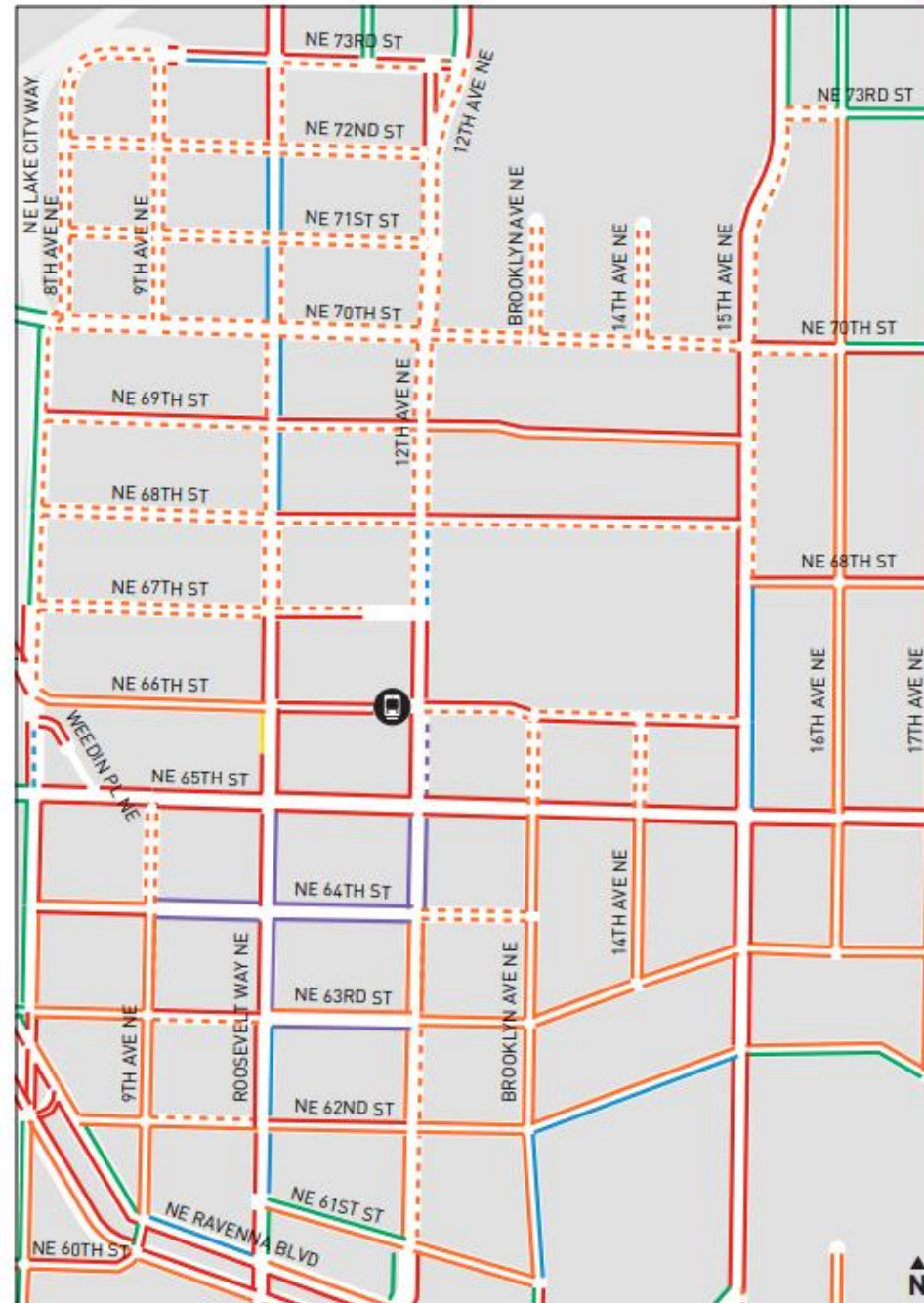


Source: Sound Transit Roosevelt Station Project Map & Summary

Curbside management tools

- Paid parking
- Time limit restrictions
- Load zones
- Restricted Parking Zones (RPZs)

DRAFT Proposed changes



LEGEND

- Proposed 2-hour Time Limited
- Proposed RPZ Expansion
- Proposed Paid Parking

Existing Parking Regulations

- No Parking Allowed
- Paid Parking
- Restricted Parking Zone
- Time Limited Parking
- Unrestricted Parking
- Load Zone
- Future Roosevelt Light Rail Station

Restricted Parking Zones (RPZs)

- Installed adjacent in residences in order to prevent all-day commuter parking
- Facilitate resident and short-term visitor access
- Do not manage demand among residents in a neighborhood

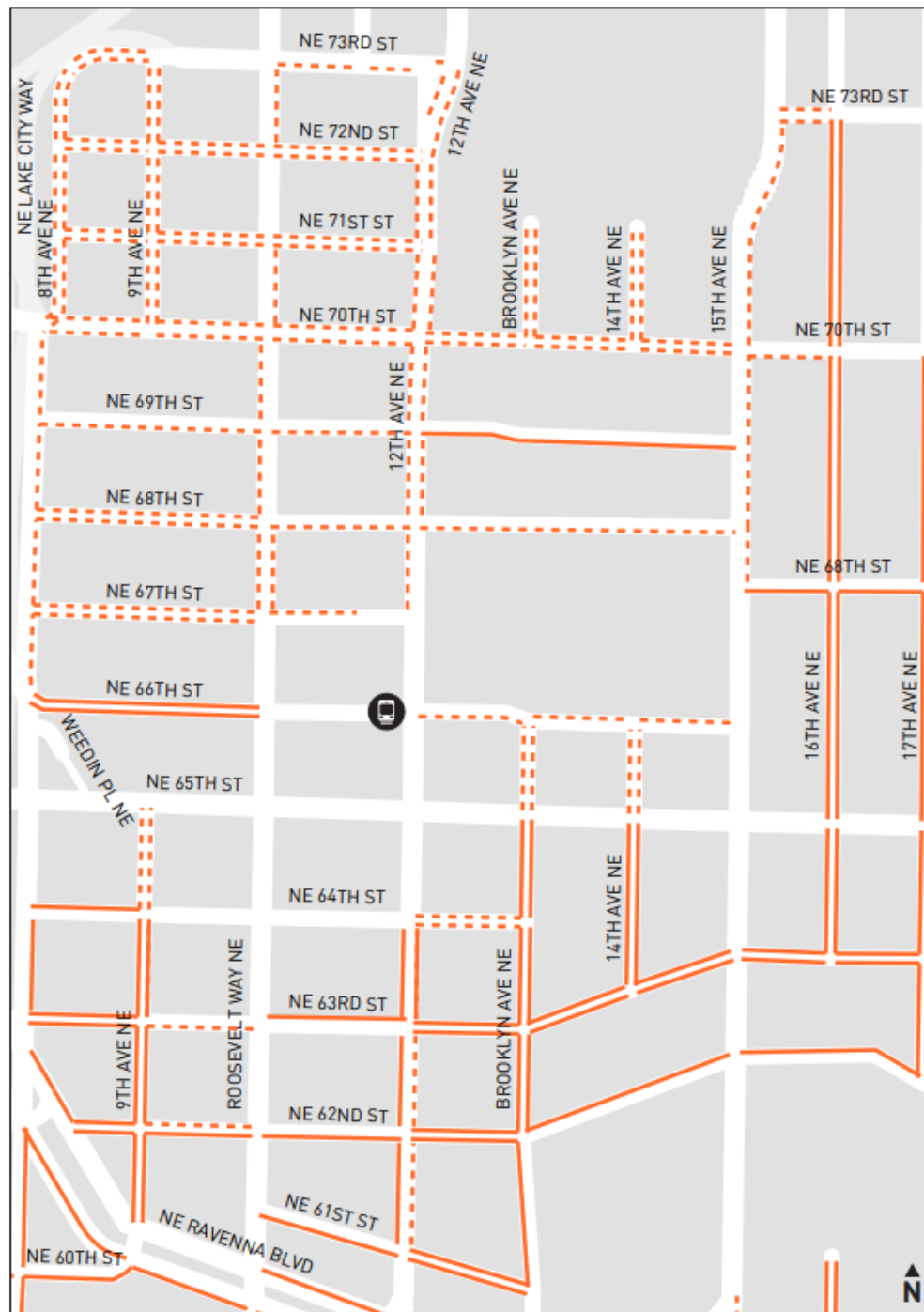


How do RPZs work?

- Permits exempt residents from time limit
- Other vehicles subject to 2-hour time limit
- 4 decal permits, 1 guest permit per household
- \$65/permit for two years
 - South of 65th & East of Roosevelt Way: UW partially subsidizes 1st permit
- Income eligible permit available



Just the RPZ



LEGEND

--- Proposed RPZ Expansion

Existing Parking Regulations

— Restricted Parking Zone

● Future Roosevelt Light Rail Station

Next steps

Activity	Date
Public outreach on proposed changes <ul style="list-style-type: none">• Mailing• Online survey• Comments by email/phone	February-April 2021
Public hearing	April 2021 (likely)
Refine parking changes based on feedback received	April-May 2021
Sign installations	Summer-early fall 2021
Station Opens	September 2021
Ongoing monitoring and feedback collection	September 2021 and beyond

Construction projects

- Northgate Bridge
- RapidRide J Line (Formerly RapidRide Roosevelt)
- 15th Ave NE

Northgate Bridge



- I-5 closures in May 2021 with detours
- Completion before September aligned to opening of Northgate Link light rail station

This map illustrates the proposed light rail corridors for the Northgate and Roosevelt areas in Seattle. The Northgate corridor is shown in orange, starting from Northgate Station and heading south along 105th Avenue. The Roosevelt corridor is shown in green, starting from Roosevelt Station and heading south along 10th Avenue. Both corridors are marked with station locations and planned connections to existing transit lines. The map also shows major roads like NE Northgate Way, NE 100th St, NE 120th St, NE 140th St, NE 160th St, NE 180th St, NE 200th St, NE 220th St, NE 240th St, NE 260th St, NE 280th St, NE 300th St, NE 320th St, NE 340th St, NE 360th St, NE 380th St, NE 400th St, NE 420th St, NE 440th St, NE 460th St, NE 480th St, NE 500th St, NE 520th St, NE 540th St, NE 560th St, NE 580th St, NE 600th St, NE 620th St, NE 640th St, NE 660th St, NE 680th St, NE 700th St, NE 720th St, NE 740th St, NE 760th St, NE 780th St, NE 800th St, NE 820th St, NE 840th St, NE 860th St, NE 880th St, NE 900th St, NE 920th St, NE 940th St, NE 960th St, NE 980th St, NE 1000th St, NE 1020th St, NE 1040th St, NE 1060th St, NE 1080th St, NE 1100th St, NE 1120th St, NE 1140th St, NE 1160th St, NE 1180th St, NE 1200th St, NE 1220th St, NE 1240th St, NE 1260th St, NE 1280th St, NE 1300th St, NE 1320th St, NE 1340th St, NE 1360th St, NE 1380th St, NE 1400th St, NE 1420th St, NE 1440th St, NE 1460th St, NE 1480th St, NE 1500th St, NE 1520th St, NE 1540th St, NE 1560th St, NE 1580th St, NE 1600th St, NE 1620th St, NE 1640th St, NE 1660th St, NE 1680th St, NE 1700th St, NE 1720th St, NE 1740th St, NE 1760th St, NE 1780th St, NE 1800th St, NE 1820th St, NE 1840th St, NE 1860th St, NE 1880th St, NE 1900th St, NE 1920th St, NE 1940th St, NE 1960th St, NE 1980th St, NE 2000th St, NE 2020th St, NE 2040th St, NE 2060th St, NE 2080th St, NE 2100th St, NE 2120th St, NE 2140th St, NE 2160th St, NE 2180th St, NE 2200th St, NE 2220th St, NE 2240th St, NE 2260th St, NE 2280th St, NE 2300th St, NE 2320th St, NE 2340th St, NE 2360th St, NE 2380th St, NE 2400th St, NE 2420th St, NE 2440th St, NE 2460th St, NE 2480th St, NE 2500th St, NE 2520th St, NE 2540th St, NE 2560th St, NE 2580th St, NE 2600th St, NE 2620th St, NE 2640th St, NE 2660th St, NE 2680th St, NE 2700th St, NE 2720th St, NE 2740th St, NE 2760th St, NE 2780th St, NE 2800th St, NE 2820th St, NE 2840th St, NE 2860th St, NE 2880th St, NE 2900th St, NE 2920th St, NE 2940th St, NE 2960th St, NE 2980th St, NE 3000th St, NE 3020th St, NE 3040th St, NE 3060th St, NE 3080th St, NE 3100th St, NE 3120th St, NE 3140th St, NE 3160th St, NE 3180th St, NE 3200th St, NE 3220th St, NE 3240th St, NE 3260th St, NE 3280th St, NE 3300th St, NE 3320th St, NE 3340th St, NE 3360th St, NE 3380th St, NE 3400th St, NE 3420th St, NE 3440th St, NE 3460th St, NE 3480th St, NE 3500th St, NE 3520th St, NE 3540th St, NE 3560th St, NE 3580th St, NE 3600th St, NE 3620th St, NE 3640th St, NE 3660th St, NE 3680th St, NE 3700th St, NE 3720th St, NE 3740th St, NE 3760th St, NE 3780th St, NE 3800th St, NE 3820th St, NE 3840th St, NE 3860th St, NE 3880th St, NE 3900th St, NE 3920th St, NE 3940th St, NE 3960th St, NE 3980th St, NE 4000th St, NE 4020th St, NE 4040th St, NE 4060th St, NE 4080th St, NE 4100th St, NE 4120th St, NE 4140th St, NE 4160th St, NE 4180th St, NE 4200th St, NE 4220th St, NE 4240th St, NE 4260th St, NE 4280th St, NE 4300th St, NE 4320th St, NE 4340th St, NE 4360th St, NE 4380th St, NE 4400th St, NE 4420th St, NE 4440th St, NE 4460th St, NE 4480th St, NE 4500th St, NE 4520th St, NE 4540th St, NE 4560th St, NE 4580th St, NE 4600th St, NE 4620th St, NE 4640th St, NE 4660th St, NE 4680th St, NE 4700th St, NE 4720th St, NE 4740th St, NE 4760th St, NE 4780th St, NE 4800th St, NE 4820th St, NE 4840th St, NE 4860th St, NE 4880th St, NE 4900th St, NE 4920th St, NE 4940th St, NE 4960th St, NE 4980th St, NE 5000th St, NE 5020th St, NE 5040th St, NE 5060th St, NE 5080th St, NE 5100th St, NE 5120th St, NE 5140th St, NE 5160th St, NE 5180th St, NE 5200th St, NE 5220th St, NE 5240th St, NE 5260th St, NE 5280th St, NE 5300th St, NE 5320th St, NE 5340th St, NE 5360th St, NE 5380th St, NE 5400th St, NE 5420th St, NE 5440th St, NE 5460th St, NE 5480th St, NE 5500th St, NE 5520th St, NE 5540th St, NE 5560th St, NE 5580th St, NE 5600th St, NE 5620th St, NE 5640th St, NE 5660th St, NE 5680th St, NE 5700th St, NE 5720th St, NE 5740th St, NE 5760th St, NE 5780th St, NE 5800th St, NE 5820th St, NE 5840th St, NE 5860th St, NE 5880th St, NE 5900th St, NE 5920th St, NE 5940th St, NE 5960th St, NE 5980th St, NE 6000th St, NE 6020th St, NE 6040th St, NE 6060th St, NE 6080th St, NE 6100th St, NE 6120th St, NE 6140th St, NE 6160th St, NE 6180th St, NE 6200th St, NE 6220th St, NE 6240th St, NE 6260th St, NE 6280th St, NE 6300th St, NE 6320th St, NE 6340th St, NE 6360th St, NE 6380th St, NE 6400th St, NE 6420th St, NE 6440th St, NE 6460th St, NE 6480th St, NE 6500th St, NE 6520th St, NE 6540th St, NE 6560th St, NE 6580th St, NE 6600th St, NE 6620th St, NE 6640th St, NE 6660th St, NE 6680th St, NE 6700th St, NE 6720th St, NE 6740th St, NE 6760th St, NE 6780th St, NE 6800th St, NE 6820th St, NE 6840th St, NE 6860th St, NE 6880th St, NE 6900th St, NE 6920th St, NE 6940th St, NE 6960th St, NE 6980th St, NE 7000th St, NE 7020th St, NE 7040th St, NE 7060th St, NE 7080th St, NE 7100th St, NE 7120th St, NE 7140th St, NE 7160th St, NE 7180th St, NE 7200th St, NE 7220th St, NE 7240th St, NE 7260th St, NE 7280th St, NE 7300th St, NE 7320th St, NE 7340th St, NE 7360th St, NE 7380th St, NE 7400th St, NE 7420th St, NE 7440th St, NE 7460th St, NE 7480th St, NE 7500th St, NE 7520th St, NE 7540th St, NE 7560th St, NE 7580th St, NE 7600th St, NE 7620th St, NE 7640th St, NE 7660th St, NE 7680th St, NE 7700th St, NE 7720th St, NE 7740th St, NE 7760th St, NE 7780th St, NE 7800th St, NE 7820th St, NE 7840th St, NE 7860th St, NE 7880th St, NE 7900th St, NE 7920th St, NE 7940th St, NE 7960th St, NE 7980th St, NE 8000th St, NE 8020th St, NE 8040th St, NE 8060th St, NE 8080th St, NE 8100th St, NE 8120th St, NE 8140th St, NE 8160th St, NE 8180th St, NE 8200th St, NE 8220th St, NE 8240th St, NE 8260th St, NE 8280th St, NE 8300th St, NE 8320th St, NE 8340th St, NE 8360th St, NE 8380th St, NE 8400th St, NE 8420th St, NE 8440th St, NE 8460th St, NE 8480th St, NE 8500th St, NE 8520th St, NE 8540th St, NE 8560th St, NE 8580th St, NE 8600th St, NE 8620th St, NE 8640th St, NE 8660th St, NE 8680th St, NE 8700th St, NE 8720th St, NE 8740th St, NE 8760th St, NE 8780th St, NE 8800th St, NE 8820th St, NE 8840th St, NE 8860th St, NE 8880th St, NE 8900th St, NE 8920th St, NE 8940th St, NE 8960th St, NE 8980th St, NE 9000th St, NE 9020th St

- RapidRide J Line will improve transit connections to the **Eastlake, South Lake Union and Roosevelt** neighborhoods and **University** district.
- North Link Connections Mobility Project planned for September 2021 will improve transit connections to Link light rail.
- Local connections to J Line between U District and Roosevelt Link stations include:
 - Metro Routes 45, 67, and 73

RapidRide J Line



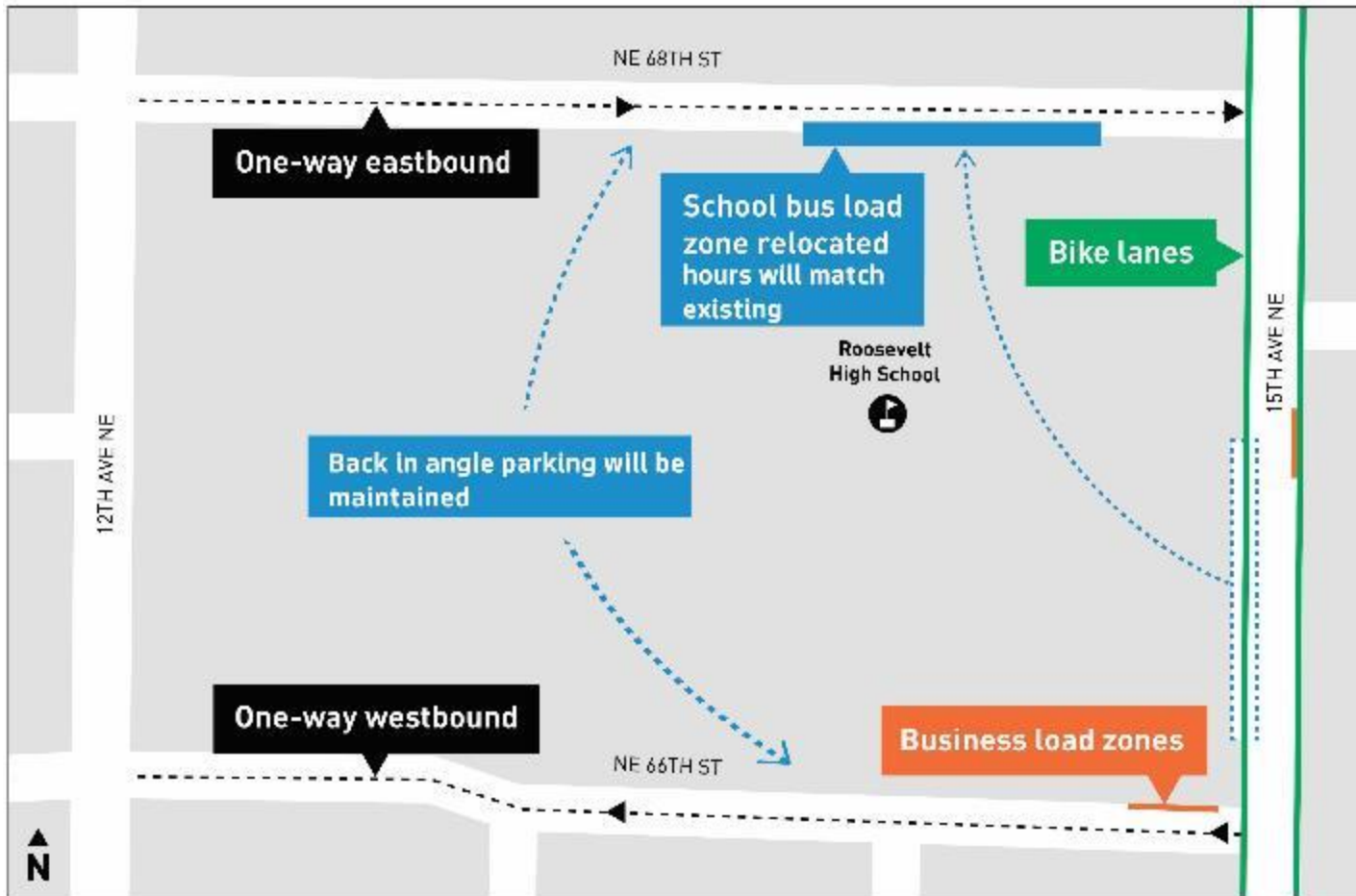
- Shortened alignment now ending at U District Link light rail station instead of Roosevelt station
- Supplemental environmental assessment comment period expected in spring 2021

15th Ave NE



- NE 55th St up to Lake City Way NE
 - paving
 - signal changes
 - new crossings
 - sidewalk upgrades
 - protected bike lanes

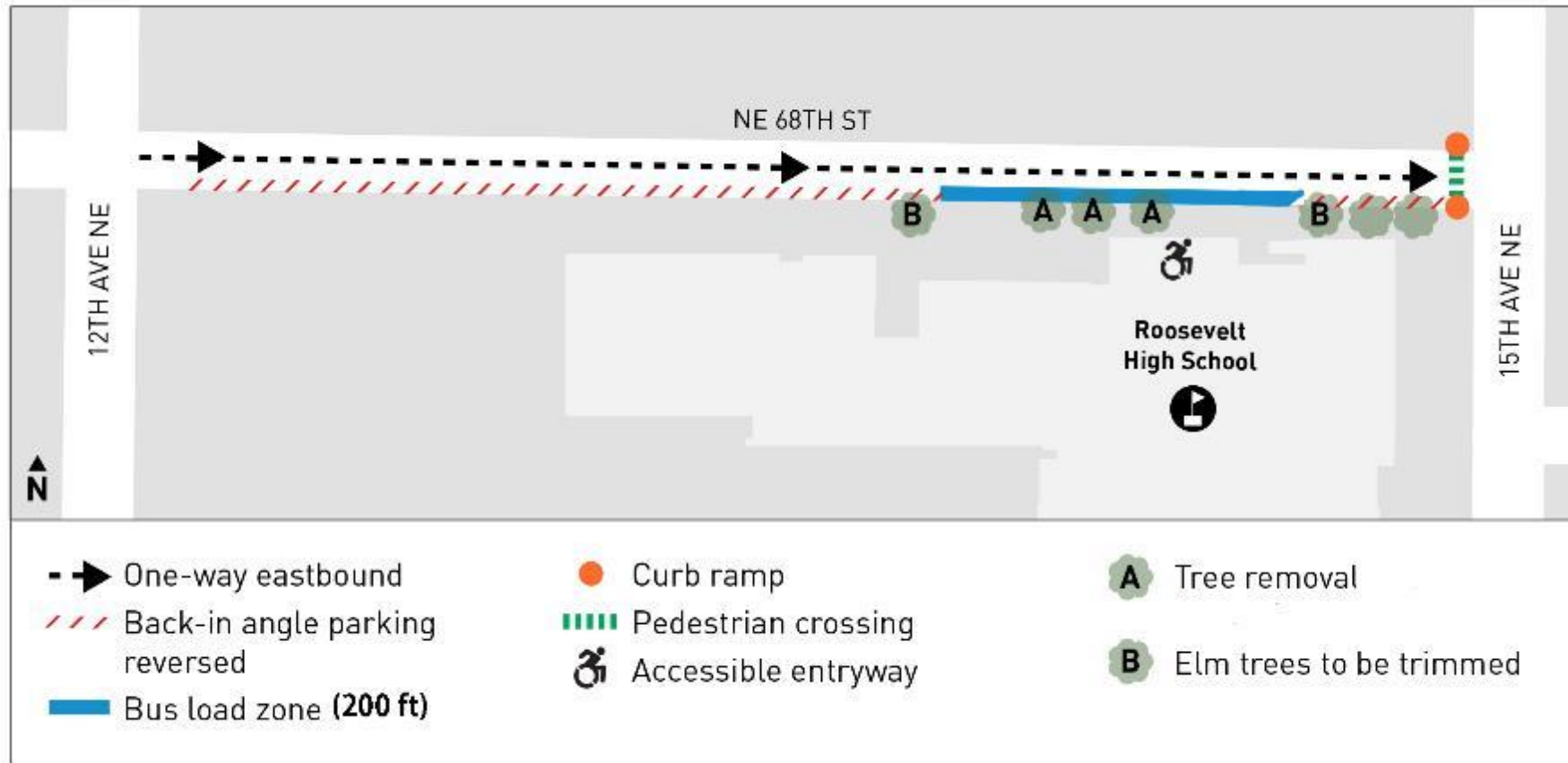
15th Ave NE



Changes around Roosevelt High School include:

- moving the bus load zone from 15th Ave NE onto NE 68th St
- reversing the direction of NE 68th St and NE 66th St.

15th Ave NE



- The buses will load near the accessible school entrance on NE 68th St
- Initial sidewalk and tree work will begin as soon as March 29

15th Ave NE



- Initial sidewalk and tree work will begin as soon as March 29
- Parking will not be available for one week
- Parking will be available on 15th Ave NE

Questions?

becky.edmonds@seattle.gov | (206) 305-8029

darrell.bulmer@seattle.gov | (206) 256-5563

<https://www.seattle.gov/transportation/projects-and-programs/programs/parking-program/community-access-and-parking-program>

www.seattle.gov/transportation



Map of study area

- $\frac{1}{4}$ and $\frac{1}{2}$ mile areas around station

